

Grace Medical

We Listen.

Grace Medical, Inc.
8500 Wolf Lake Drive, Suite 110
Memphis, TN 38133 USA
Phone 1.901.386.0990
Fax 1.901.386.0950
Toll Free 1.866.472.2363
info@gracemedical.com
www.gracemedical.com

©2018 Grace Medical, Inc. All Rights Reserved

LIT0041 CID6009 Rev. 2018-08



Welcome, and Thank You for your interest in Grace Medical. We are a global market leader in ENT, offering an extensive range of products to treat disorders of the ear, nose and throat. We strive each and every day to help improve patient care. Simply put, we want to make a difference. We are a socially responsible company, committed to making long-term contributions to our specialty through research, education and support of humanitarian efforts.

It starts with world-class product designs, proven materials, and a commitment to set the gold standard in customer service. We offer a personal touch rarely seen in today's business world. Have a special need? Give us a call, we'd love to help.

Grace Medical brings passion, focus and energy to everything we do. Innovation. Quality. Customer Care. Integrity. Reliability.

Your partner for ENT healthcare.



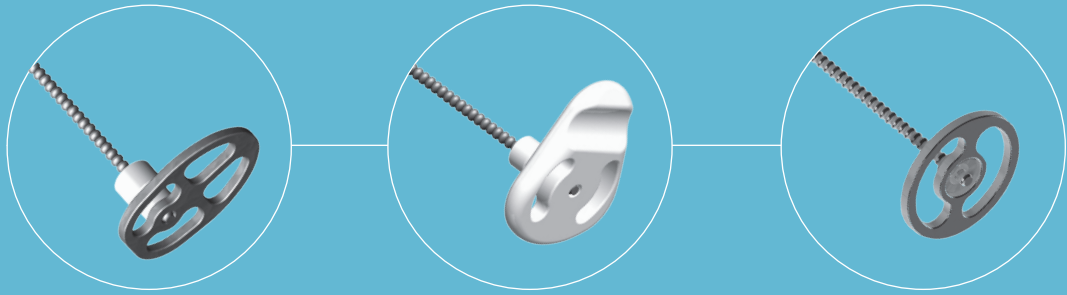
Grace Medical We Listen.

8500 WOLF LAKE DRIVE, SUITE 110
MEMPHIS, TN 38133 USA
901.386.0990 • TOLL FREE 1.866.472.2363
FAX: 901.386.0950

info@gracemedical.com • www.gracemedical.com

Table of Contents

Ossicular Protheses	3
Stapes Protheses	27
Ventilation Tubes & Myringotomy Accessories	39
Specialty Products	53
Office Instruments	65
Otomed	87
Product Information and Trade Policy	93



Ossicular Prostheses

Ossicular Prosthesis

Offset ALTO Total

Ref. #	Material	Head Size	Adjustable Length	Distal End Dia.
600	Titanium	2.50mm x 3.50mm	2.50mm to 7.00mm	0.8mm



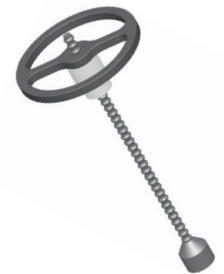
Offset ALTO Partial

Ref. #	Material	Head Size	Adjustable Length	Distal End Dia.
650	Titanium	2.50mm x 3.50mm	1.50mm to 5.60mm	1.45mm cup



Centered ALTO Total

Ref. #	Material	Head Size	Adjustable Length	Distal End Dia.
605	Titanium	3.00mm	2.50mm to 7.00mm	0.8mm



Centered ALTO Total w/ Integrated Shoe

Ref. #	Material	Head Size	Adjustable Length	Distal End
604	Titanium	3.00mm	2.50mm to 7.00mm	0.8mm x 2.30mm

Designed in conjunction with Jacques Herzog, MD, St. Louis, MO



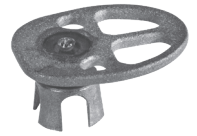
Centered ALTO Partial

Ref. #	Material	Head Size	Adjustable Length	Distal End Dia.
655	Titanium	3.00mm	1.50mm to 5.60mm	1.45mm cup



Offset ALTO Concise Partial

Ref. #	Material	Head Size	Adjustable Length	Distal End
650-075	Titanium	2.50mm x 3.50mm	0.75mm to 5.75mm	1.45mm cup


Centered ALTO Concise Partial

Ref. #	Material	Head Size	Adjustable Length	Distal End
655-075	Titanium	3.00mm	0.75mm to 5.75mm	1.45mm cup


Centered ALTO Byte Partial

Ref. #	Material	Head Size	Adjustable Length	Distal End
655B	Titanium	3.00mm	2.25mm to 5.60mm	Adjustable

*May not be available in all countries


Offset Nano ALTO Byte Partial

Ref. #	Material	Head Size	Adjustable Length	Distal End
654	Titanium	1.50mm x 2.50mm	2.25mm to 5.60mm	Adjustable

*May not be available in all countries


Silverstein ALTO Total w/ Tack

Ref. #	Material	Head Size	Adjustable Length	Distal End Dia.
601	Titanium	2.50mm x 3.50mm	2.50mm to 7.00mm	0.8mm

Designed in conjunction with Herb Silverstein, MD, Sarasota, FL



Ossicular Prostheses

Offset Nano ALTO Total

Ref. #	Material	Head Size	Adjustable Length	Distal End Dia.
603	Titanium	1.50mm x 2.50mm	2.50mm to 7.00mm	0.8mm

Designed in conjunction with Peter Weber, MD, Boston, MA



Offset Nano ALTO Total w/ Integrated Shoe

Ref. #	Material	Head Size	Adjustable Length	Distal End
607	Titanium	1.50mm x 2.50mm	2.50mm to 7.00mm	0.86mm x 1.27mm

Designed in conjunction with Peter Weber, MD, Boston, MA



Offset Nano ALTO Partial

Ref. #	Material	Head Size	Adjustable Length	Distal End Dia.
653	Titanium	1.50mm x 2.50mm	1.50mm to 5.60mm	1.45mm cup

Designed in conjunction with Peter Weber, MD, Boston, MA



Centered Nano ALTO Total

Ref. #	Material	Head Size	Adjustable Length	Distal End Dia.
611	Titanium	1.50mm x 2.50mm	2.50mm to 7.00mm	0.8mm

Designed in conjunction with Bruce Gantz, MD, Iowa City, IA



Centered Nano ALTO Partial

Ref. #	Material	Head Size	Adjustable Length	Distal End Dia.
651	Titanium	1.50mm x 2.50mm	1.50mm to 5.60mm	1.45mm cup

Designed in conjunction with Bruce Gantz, MD, Iowa City, IA



Owens Assure ALTO Total w/ Integrated Shoe

Ref. #	Material	Head Size	Adjustable Length	Distal End
602	Titanium	2.00mm x 2.50mm	2.50mm to 7.00mm	0.8mm x 2.30mm

Designed in conjunction with Robert Owens, MD, Dallas, TX



Owens Assure ALTO Total

Ref. #	Material	Head Size	Adjustable Length	Distal End Dia.
602R	Titanium	2.00mm x 2.50mm	2.50mm to 7.00mm	0.8mm

Designed in conjunction with Robert Owens, MD, Dallas, TX



Owens Assure ALTO Partial

Ref. #	Material	Head Size	Adjustable Length	Distal End Dia.
652	Titanium	2.00mm x 2.50mm	1.50mm to 5.60mm	1.45mm cup

Designed in conjunction with Robert Owens, MD, Dallas, TX



Gluth ALTO Total

Ref. #	Material	Head Size	Adjustable Length	Distal End Dia.
648	Titanium	3.25mm x 4.00mm	2.50mm to 7.00mm	0.8mm

Designed in conjunction with Michael Gluth, MD, Chicago, IL



Gluth ALTO Partial

Ref. #	Material	Head Size	Adjustable Length	Distal End Dia.
678	Titanium	3.25mm x 4.00mm	1.50mm to 5.60mm	1.45mm cup

Designed in conjunction with Michael Gluth, MD, Chicago, IL



Ossicular Prosthesis

HA ALTO Total

Ref. #	Material	Head Size	Adjustable Length	Distal End Dia.
620	HA/Titanium	1.80mm x 3.00mm	3.00mm to 7.00mm	0.8mm



HA ALTO Partial

Ref. #	Material	Head Size	Adjustable Length	Distal End Dia.
670	HA/Titanium	1.80mm x 3.00mm	2.00mm to 5.60mm	1.45mm cup



Bojrab ALTO Total

Ref. #	Material	Head Size	Adjustable Length	Distal End Dia.
625	HA/Titanium	1.50mm x 2.00mm	3.00mm to 7.00mm	0.8mm

Designed in conjunction with Dennis Bojrab, MD, Farmington Hills, MI



Bojrab ALTO Total w/ Integrated Shoe

Ref. #	Material	Head Size	Adjustable Length	Distal End
625B	HA /Titanium	1.50mm x 2.00mm	3.00mm to 7.00mm	0.86mm x 1.27mm

Designed in conjunction with Dennis Bojrab, MD, Farmington Hills, MI



Bojrab ALTO Partial

Ref. #	Material	Head Size	Adjustable Length	Distal End Dia.
675	HA/Titanium	1.50mm x 2.00mm	2.00mm to 5.60mm	1.45mm cup

Designed in conjunction with Dennis Bojrab, MD, Farmington Hills, MI



Bojrab ALTO Precut

Ref. #	Material	Head Size	Adjustable Length	Distal End Dia.
671	HA/Titanium	1.50mm x 2.00mm	2.00mm to 2.50mm	1.45mm cup

Designed in conjunction with Dennis Bojrab, MD, Farmington Hills, MI



Sataloff ALTO Total

Ref. #	Material	Head Size	Adjustable Length	Distal End Dia.
624	HA /Titanium	1.80mm x 3.00mm	3.00mm to 7.00mm	0.8mm

Designed in conjunction with Robert Sataloff, MD, Philadelphia, PA



Sataloff ALTO Partial

Ref. #	Material	Head Size	Adjustable Length	Distal End Dia.
674	HA/Titanium	1.80mm x 3.00mm	2.00mm to 5.60mm	1.45mm cup

Designed in conjunction with Robert Sataloff, MD, Philadelphia, PA



HA Lite ALTO Total

Ref. #	Material	Head Size	Adjustable Length	Distal End Dia.
630	HA/Titanium	3.00mm	3.00mm to 7.00mm	0.8mm



HA Lite ALTO Total w/ Integrated Shoe

Ref. #	Material	Head Size	Adjustable Length	Distal End
630B	HA/Titanium	3.00mm	3.00mm to 7.00mm	0.8mm x 2.30mm



Ossicular Prosthesis

HA Lite ALTO Partial

Ref. #	Material	Head Size	Adjustable Length	Distal End Dia.
685	HA/Titanium	3.00mm	2.00mm to 5.60mm	1.45mm cup



Dornhoffer ALTO Total w/ Shoe & Windows

Ref. #	Material	Head Size	Adjustable Length	Distal End
626	HA/Titanium	4.00mm x 3.25mm	3.00mm to 7.00mm	0.86mm x 1.27mm

Designed in conjunction with John Dornhoffer, MD, Little Rock, AR



Dornhoffer ALTO Total

Ref. #	Material	Head Size	Adjustable Length	Distal End Dia.
635	HA/Titanium	4.00mm x 3.25mm	3.00mm to 7.00mm	0.8mm

Designed in conjunction with John Dornhoffer, MD, Little Rock, AR



Dornhoffer ALTO Total w/ Windows

Ref. #	Material	Head Size	Adjustable Length	Distal End Dia.
637	HA/Titanium	4.00mm x 3.25mm	3.00mm to 7.00mm	0.8mm

Designed in conjunction with John Dornhoffer, MD, Little Rock, AR



Dornhoffer ALTO Partial

Ref. #	Material	Head Size	Adjustable Length	Distal End Dia.
695	HA/Titanium	4.00mm x 3.25mm	2.00mm to 5.60mm	1.45mm cup

Designed in conjunction with John Dornhoffer, MD, Little Rock, AR



Dornhoffer ALTO Partial w/ Windows

Ref. #	Material	Head Size	Adjustable Length	Distal End Dia.
687	HA/Titanium	4.00mm x 3.25mm	2.00mm to 5.60mm	1.45mm cup

Designed in conjunction with John Dornhoffer, MD, Little Rock, AR



Dornhoffer Fixed Length Partial

Ref. #	Material	Head Size	Length	Distal End Dia.
690	HA/Titanium	4.00mm x 3.25mm	2.00mm	1.45mm cup

Designed in conjunction with John Dornhoffer, MD, Little Rock, AR



Dornhoffer Fixed Length Partial w/ Windows

Ref. #	Material	Head Size	Length	Distal End Dia.
691	HA/Titanium	4.00mm x 3.25mm	2.00mm	1.45mm cup

Designed in conjunction with John Dornhoffer, MD, Little Rock, AR



Dornhoffer Footplate Shoe

Ref. #	Material	Length	Width	Height	ID
636-080	Titanium	1.40mm	1.09mm	1.14mm	0.8mm

Designed in conjunction with John Dornhoffer, MD, Little Rock, AR
Compatible with all Titanium Shaft Totals



Haberman ALTO Total Round Head

Ref. #	Material	Head Size	Adjustable Length	Distal End Dia.
608	HA/Titanium	3.30mm	3.00mm to 7.00mm	0.8mm

Designed in conjunction with Rex Haberman, MD, Minneapolis, MN



Ossicular Prostheses

Haberman ALTO Partial Round Head

Ref. #	Material	Head Size	Adjustable Length	Distal End Dia.
659	HA/Titanium	3.30mm	2.00mm to 5.60mm	1.45mm cup

Designed in conjunction with Rex Haberman, MD, Minneapolis, MN



Haberman ALTO Partial Rectangle Head

Ref. #	Material	Head Size	Adjustable Length	Distal End Dia.
658	HA/Titanium	3.00mm x 2.00mm	2.00mm to 5.60mm	1.45mm cup

Designed in conjunction with Rex Haberman, MD, Minneapolis, MN



Moretz Delta ALTO Total

Ref. #	Material	Head Size	Adjustable Length	Distal End Dia.
647	HA/Titanium	2.20mm x 3.00mm	3.00mm to 7.00mm	0.8mm

Designed in conjunction with William Moretz, MD, Augusta, GA



Moretz Delta ALTO Partial

Ref. #	Material	Head Size	Adjustable Length	Distal End Dia.
697	HA/Titanium	2.20mm x 3.00mm	2.00mm to 5.60mm	1.45mm cup

Designed in conjunction with William Moretz, MD, Augusta, GA



Moretz ALTO Total

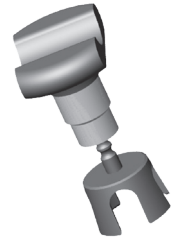
Ref. #	Material	Head Size	Adjustable Length	Distal End Dia.
612-001L	HA/Titanium	1.90mm x 5.60mm	3.00mm to 7.00mm	0.8mm
612-002R	HA/Titanium	1.90mm x 5.60mm	3.00mm to 7.00mm	0.8mm

Designed in conjunction with William Moretz, MD, Augusta, GA



Wedge Incus Strut

Ref. #	Material	Head Size	Adjustable Length	Distal End Dia.
657	Titanium	2.30mm x 1.50mm	1.75mm to 2.25mm	1.45mm cup
656	Titanium	2.30mm x 1.50mm	2.25mm to 3.50mm	1.45mm cup



Designed in conjunction with Cliff Megerian, MD, Cleveland, OH,
Dennis Bojrab, MD, Farmington Hills, MI, Joseph Chen, MD, Toronto, Ontario, Canada

Kraus K-Helix Crown

Ref. #	Material	Coil Length	Distal End Dia.
756-300	Titanium	2.75mm	1.45mm cup



Designed in conjunction with Eric Kraus, MD, Greensboro, NC

Kraus K-Helix Piston

Ref. #	Material	Coil Length	Functional Length	Distal End Dia.
757-300	Titanium	2.75mm	4.70mm	0.6mm



Designed in conjunction with Eric Kraus, MD, Greensboro, NC

K-Helix Footplate Shoe

Ref. #	Material	Length	Width	Height	ID
636-060	Titanium	1.40mm	0.86mm	1.14mm	0.6mm



Ossicular Prosthesis

Offset Duo ALTO Total w/ Stapes Adaptor

Ref. #	Material	Head Size	Adjustable Length	Torp Distal End Dia.	Cup Distal End Dia.
600A	Titanium	2.50mm x 3.50mm	2.00mm to 7.00mm	0.8mm	1.45mm cup

Designed in conjunction with Howard Francis, MD, Durham, NC



Centered Duo ALTO Total w/ Stapes Adaptor

Ref. #	Material	Head Size	Adjustable Length	Torp Distal End Dia.	Cup Distal End Dia.
605A	Titanium	3.00mm	2.00mm to 7.00mm	0.8mm	1.45mm cup

Designed in conjunction with Howard Francis, MD, Durham, NC



Strasnick Partial Tilt-Top

Ref. #	Material	Head Size	Length	Distal End Dia.
270-600	Titanium/Otosil	3.00mm	6.10mm	1.12mm

Designed in conjunction with Barry Strasnick, MD, Norfolk, VA



Strasnick Total Tilt-Top

Ref. #	Material	Head Size	Length	Distal End Dia.
220-800	Titanium/Otosil	3.00mm	8.00mm	0.9mm

Designed in conjunction with Barry Strasnick, MD, Norfolk, VA



Vincent Total

Ref. #	Material	Head Size	Length	Distal End Dia.
280	HA /Flpl	2.00mm x 2.50mm	8.60mm	0.4mm

Designed in conjunction with Robert Vincent, MD, Béziers, France



Vincent ALTO Total w/ Band

Ref. #	Material	Head Size	Adjustable Length	Distal End Dia.
614	HA /Titanium	2.00mm x 3.30mm	3.00mm to 7.00mm	0.8mm

Designed in conjunction with Robert Vincent, MD, Causse Ear Clinic, Béziers, France

*May not be available in all countries



Centered ALTO Total w/ Band

Ref. #	Material	Head Size	Adjustable Length	Distal End Dia.
617	Titanium	3.00mm	2.50mm to 7.00mm	0.8mm

*May not be available in all countries



HA Lite ALTO Total w/ Band

Ref. #	Material	Head Size	Adjustable Length	Distal End Dia.
618	HA /Titanium	3.00mm	3.00mm to 7.00mm	0.8mm

*May not be available in all countries



Bojrab ALTO Total w/ Band

Ref. #	Material	Head Size	Adjustable Length	Distal End Dia.
619	HA /Titanium	1.50mm x 2.00mm	3.00mm to 7.00mm	0.8mm

Designed in conjunction with Dennis Bojrab, MD, Farmington Hills, MI

*May not be available in all countries



Ossicular Prosthesis

Wehrs Single Notch Incus-Stapes

Ref. #	Material	Length	Distal End Dia.
209	HA/Otosil	9.14mm	1.00mm



Wehrs Single Notch Incus

Ref. #	Material	Length	Distal End Dia.
259	HA/Otosil	8.10mm	1.10mm



Wehrs Double Notch Incus-Stapes

Ref. #	Material	Length	Distal End Dia.
210	HA/Otosil	9.14mm	1.00mm



Wehrs Double Notch Incus

Ref. #	Material	Length	Distal End Dia.
260	HA/Otosil	8.10mm	1.10mm



Frisbee Partial

Ref. #	Length	Material	Head Size	Distal End Dia.
750-050	0.5mm	Titanium	3.00mm	1.17mm
750-100	1.00mm			
750-150	1.50mm			
751-200	2.00mm			
749-050	0.5mm	HA	3.00mm	1.17mm
749-100	1.00mm	HA	3.00mm	1.17mm
749-150	1.50mm			



Designed in conjunction with Herb Silverstein, MD, Sarasota, FL
 Designed in conjunction with Antonio De la Cruz, MD, Los Angeles, CA

Precise HA Lite Total

Material	Type	Shaft Dia.	Distal End Dia.	Length	Ref. #
HA/Titanium	Centered	0.2mm	0.8mm	3.00mm	720-300
				3.25mm	720-325
				3.50mm	720-350
				3.75mm	720-375
				4.00mm	720-400
				4.25mm	720-425
				4.50mm	720-450
				4.75mm	720-475
				5.00mm	720-500
				5.25mm	720-525
				5.50mm	720-550
				5.75mm	720-575
				6.00mm	720-600
				6.25mm	720-625
				6.50mm	720-650
				6.75mm	720-675
				7.00mm	720-700



Designed in conjunction with Michael Hoffer, MD, Miami, FL

Precise HA Lite Partial

Material	Type	Shaft Dia.	Distal End Dia.	Length	Ref. #
HA/Titanium	Centered	0.2mm	1.45mm cup	1.75mm	770-175
				2.00mm	770-200
				2.25mm	770-225
				2.50mm	770-250
				2.75mm	770-275
				3.00mm	770-300
				3.25mm	770-325
				3.50mm	770-350
				3.75mm	770-375
				4.00mm	770-400
				4.25mm	770-425
				4.50mm	770-450



Designed in conjunction with Michael Hoffer, MD, Miami, FL

Ossicular Prosthesis

Precise Centered Total

Material	Type	Shaft Dia.	Distal End Dia.	Length	Ref. #
Titanium	Centered	0.2mm	0.8mm	1.50mm	705-150
				2.00mm	705-200
				2.50mm	705-250
				3.00mm	705-300
				3.25mm	705-325
				3.50mm	705-350
				3.75mm	705-375
				4.00mm	705-400
				4.25mm	705-425
				4.50mm	705-450
				4.75mm	705-475
				5.00mm	705-500
				5.25mm	705-525
				5.50mm	705-550
				5.75mm	705-575
				6.00mm	705-600
				6.25mm	705-625
				6.50mm	705-650
				6.75mm	705-675
				7.00mm	705-700



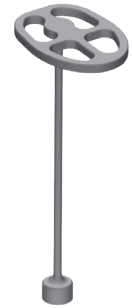
Precise Centered Partial

Material	Type	Shaft Dia.	Distal End Dia.	Length	Ref. #
Titanium	Centered	0.2mm	1.45mm cup	0.50mm	765-050
				0.75mm	765-075
				1.00mm	765-100
				1.25mm	765-125
				1.50mm	765-150
				1.75mm	765-175
				2.00mm	765-200
				2.25mm	765-225
				2.50mm	765-250
				2.75mm	765-275
				3.00mm	765-300
				3.25mm	765-325
				3.50mm	765-350
				3.75mm	765-375
				4.00mm	765-400
				4.25mm	765-425
				4.50mm	765-450
				4.75mm	765-475
				5.00mm	765-500
				5.25mm	765-525
5.50mm	765-550				



Precise Offset Total

Material	Type	Shaft Dia.	Distal End Dia.	Length	Ref. #
Titanium	Off-Centered	0.2mm	0.8mm	3.00mm	700-300
				3.25mm	700-325
				3.50mm	700-350
				3.75mm	700-375
				4.00mm	700-400
				4.25mm	700-425
				4.50mm	700-450
				4.75mm	700-475
				5.00mm	700-500
				5.25mm	700-525
				5.50mm	700-550
				5.75mm	700-575
				6.00mm	700-600
				6.25mm	700-625
				6.50mm	700-650
				6.75mm	700-675
				7.00mm	700-700


Precise Offset Partial

Material	Type	Shaft Dia.	Distal End Dia.	Length	Ref. #
Titanium	Off-Centered	0.2mm	1.45mm cup	0.50mm	751-050
				0.75mm	751-075
				1.00mm	751-100
				1.25mm	751-125
				1.50mm	751-150
				1.75mm	750-175
				2.00mm	750-200
				2.25mm	750-225
				2.50mm	750-250
				2.75mm	750-275
				3.00mm	750-300
				3.25mm	750-325
				3.50mm	750-350
				3.75mm	750-375
				4.00mm	750-400
				4.25mm	750-425
				4.50mm	750-450



Ossicular Prostheses

Precise Centered Byte Partial

Material	Type	Distal End	Length	Ref. #
Titanium	Centered	Adjustable	0.75mm	752-075
			1.00mm	752-100
			1.25mm	752-125
			1.50mm	752-150
			1.75mm	752-175
			2.00mm	752-200
			2.25mm	752-225
			2.50mm	752-250

*May not be available in all countries



Precise Owens Assure Total

Material	Type	Shaft Dia.	Distal End Dia.	Length	Ref. #
Titanium	Off-Centered	0.2mm	0.8mm	5.00mm	602-500
				5.50mm	602-550
				6.00mm	602-600



Precise Owens Assure Partial

Material	Type	Shaft Dia.	Distal End Dia.	Length	Ref. #
Titanium	Off-Centered	0.2mm	1.45mm Cup	2.75mm	652-275
				3.00mm	652-300
				3.50mm	652-350
				4.00mm	652-400
				4.50mm	652-450



Wildcat Pro

Material	Type	Distal End	Length	Ref. #
HA/Titanium	Centered	1.00mm x 1.75mm	3.00mm	709-300
			3.50mm	709-350
			4.00mm	709-400
			4.50mm	709-450
			5.00mm	709-500
			5.50mm	709-550



Designed in conjunction with Seilesh Babu, MD, Farmington Hills, MI

HA Wildcat Four 2 Three

Material	Type	Distal End	Length	Ref. #
HA/Titanium	Centered	1.00mm x 1.78mm	3.00mm	708-300
			3.50mm	708-350
			4.00mm	708-400
			4.50mm	708-450
			5.00mm	708-500
			5.50mm	708-550



Designed in conjunction with Seilesh Babu, MD, Farmington Hills, MI

Wildcat Four 2 Three Solid

Material	Type	Distal End	Length	Ref. #
Titanium	Centered	1.00mm x 1.78mm	3.00mm	707-300
			3.50mm	707-350
			4.00mm	707-400
			4.50mm	707-450
			5.00mm	707-500
			5.50mm	707-550



Designed in conjunction with Alan Micco, MD, Chicago, IL, Cliff Megerian, MD, Cleveland, OH, Seilesh Babu, MD, Farmington Hills, MI

Wildcat Four 2 Three Hollow

Material	Type	Distal End	Length	Ref. #
Titanium	Centered	1.00mm x 1.78mm	3.00mm	706-300
			3.50mm	706-350
			4.00mm	706-400
			4.50mm	706-450
			5.00mm	706-500
			5.50mm	706-550



Designed in conjunction with Alan Micco, MD, Chicago, IL, Cliff Megerian, MD, Cleveland, OH, Seilesh Babu, MD, Farmington Hills, MI

Ossicular Prosthesis

HA Total Prosthesis

Type	Material	Shaft Dia.	Head Dia.	Length	Ref.#	
Centered	HA	0.8mm	3.00mm	4.00mm	100	
				6.00mm	101	
				8.00mm	102	
				4.00mm	4.00mm	103
				6.00mm	104	
				8.00mm	105	



HA Total Prosthesis

Type	Material	Shaft Dia.	Head Dia.	Length	Ref.#
Offset	HA	0.8mm	4.00mm	4.00mm	106
				6.00mm	107
				8.00mm	108



HA Total Prosthesis

Type	Material	Shaft Dia.	Head Dia.	Length	Ref.#
Notched	HA	0.8mm	4.00mm	4.00mm	109
				6.00mm	110
				8.00mm	111



HA Partial Prosthesis

Type	Material	Length	Cannulation Dia.	Head Dia.	Ref.#
Centered	HA	5.00mm	1.17mm	3.00mm	150
				4.00mm	151



HA Partial Prosthesis

Type	Material	Length	Cannulation Dia.	Head Dia.	Ref.#
Offset	HA	5.00mm	1.17mm	4.00mm	152



HA Partial Prosthesis

Type	Material	Length	Cannulation Dia.	Head Dia.	Ref.#
Notched	HA	5.00mm	1.17mm	4.00mm	153



HA Footplate Shoe

Material	Width	Height	Ref. #
HA	2.00mm	1.32mm	192



HA Total Strut

Material	Length	Shaft Dia.	Ref. #
HA	8.00mm	0.8mm	191



HA Partial Strut

Material	Length	Cannulation Dia.	Ref. #
HA	2.75mm	1.17mm	190-275
HA	3.90mm	1.17mm	190-390
HA	4.90mm	1.17mm	190-490



Ossicular Prosthesis

Total Tilt Top

Type	Material	Length	Shaft Dia.	Head Dia.	Ref.#
Centered	Otosil / HA	8.00mm	1.00mm	3.00mm	200
				4.00mm	201



Total Tilt Top

Type	Material	Length	Shaft Dia.	Head Dia.	Ref.#
Offset	Otosil / HA	8.00mm	1.00mm	3.25mm	202
				3.50mm	207
				4.00mm	203



Total Tilt Top

Type	Material	Length	Shaft Dia.	Head Dia.	Ref.#
Notched	Otosil / HA	8.00mm	1.00mm	3.25mm	204
				3.50mm	208
				4.00mm	205



Total Tilt Top

Type	Material	Length	Shaft Dia.	Head Dia.	Ref.#
Notched	Otosil / HA	8.00mm	1.00mm	2.1mm x 2.9mm	206



Bojrab Universal

As Total		Type	Material	Head Dia.	Ref. #
Length	Shaft Dia.	Notched	Otosil/HA	4.00mm x 3.25mm	293
6.00mm	0.80mm			3.00mm	293A
As Partial					
Length	Cannulation Dia.				
2.30mm	1.17mm				



Designed in conjunction with Dennis Bojrab, MD, Farmington Hills, MI

Partial Tilt Top

Type	Material	Length	Cannulation Dia.	Head Dia.	Ref.#
Centered	Otosil / HA	6.00mm	1.12mm	3.00mm	250
				4.00mm	251


Partial Tilt Top

Type	Material	Length	Cannulation Dia.	Head Dia.	Ref.#
Offset	Otosil / HA	6.00mm	1.12mm	3.25mm	252
				3.50mm	257
				4.00mm	253


Partial Tilt Top

Type	Material	Length	Cannulation Dia.	Head Dia.	Ref.#
Notched	Otosil / HA	6.00mm	1.12mm	3.25mm	254
				3.50mm	258
				4.00mm	255


Partial Tilt Top

Type	Material	Length	Cannulation Dia.	Head Dia.	Ref.#
Notched	Otosil / HA	6.00mm	1.12mm	2.1mm x 2.9mm	256


Partial

Type	Material	Length	Cannulation Dia.	Head Dia.	Ref.#
Centered	Otosil / HA	6.00mm	1.12mm	3.00mm	270
				4.00mm	271


Partial

Type	Material	Length	Cannulation Dia.	Head Dia.	Ref.#
Offset	Otosil / HA	6.00mm	1.12mm	4.00mm	272


Partial

Type	Material	Length	Cannulation Dia.	Head Dia.	Ref.#
Notched	Otosil / HA	6.00mm	1.12mm	4.00mm	273







Stapes Prostheses

Stapes Prosthesis

Fluoroplastic Piston

Material	Loop Dia.	Shaft Dia.	Ref. #	Length
Fluoroplastic	0.6mm	0.4mm	401-350	3.50mm
			401-400	4.00mm
			401-450	4.50mm
			401-500	5.00mm
			401-600	6.00mm
	0.5mm	0.4mm	408-450	4.50mm
			408-500	5.00mm
			408-600	6.00mm
	0.6mm	0.4mm	402-350	3.50mm
			402-400	4.00mm
			402-450	4.50mm
			402-500	5.00mm
			402-600	6.00mm
			402-800	8.00mm
	0.8mm	0.4mm	403-350	3.50mm
			403-400	4.00mm
			403-450	4.50mm
			403-500	5.00mm
			403-600	6.00mm



Fluoroplastic Piston Arrigg Slit Modification

Material	Loop Dia.	Shaft Dia.	Ref. #	Length
Fluoroplastic	0.6mm	0.4mm	406-425	4.25mm
			406-450	4.50mm
			406-600	6.00mm



Titanium / Fluoroplastic Piston

Material	Type	Shaft Dia.	Ref. #	Length
Ti. / Fluoroplastic	Piston	0.6mm	409-350	3.50mm
			409-375	3.75mm
			409-400	4.00mm
			409-425	4.25mm
			409-450	4.50mm
			409-475	4.75mm
			409-500	5.00mm



Linstrom Piston

Material	Type	Shaft Dia.	Ref. #	Length
Platinum/Titanium	Piston	0.5mm	419-400	4.00mm
			419-425	4.25mm
			419-450	4.50mm
			419-475	4.75mm



Designed in conjunction with Christopher Linstrom, MD, New York, NY

Titanium Piston

Material	Type	Shaft Dia.	Ref. #	Length
Titanium	Piston	0.4mm	460-350	3.50mm
			460-375	3.75mm
			460-400	4.00mm
			460-425	4.25mm
			460-450	4.50mm
			460-475	4.75mm
			460-500	5.00mm
			460-525	5.25mm
		460-550	5.50mm	
		0.5mm	413-400	4.00mm
			413-425	4.25mm
			413-450	4.50mm
			413-475	4.75mm
		0.6mm	461-350	3.50mm
			461-375	3.75mm
			461-400	4.00mm
461-425	4.25mm			
461-450	4.50mm			
461-475	4.75mm			
461-500	5.00mm			
461-525	5.25mm			
461-550	5.50mm			



Stapes Prosthesis

Grace Piston

Material	Type	Shaft Dia.	Ref. #	Length
Platinum / Flpl	Piston	0.4mm	412-375	3.75mm
			412-400	4.00mm
			412-425	4.25mm
			412-450	4.50mm
			412-475	4.75mm
			412-500	5.00mm
			412-600	6.00mm
		0.5mm	452-375	3.75mm
			452-400	4.00mm
			452-425	4.25mm
			452-450	4.50mm
			452-475	4.75mm
			452-500	5.00mm
		0.6mm	453-375	3.75mm
			453-400	4.00mm
			453-425	4.25mm
			453-450	4.50mm
			453-475	4.75mm
			453-500	5.00mm



De la Cruz Piston

Material	Type	Shaft Dia.	Ref. #	Length
Platinum/Flpl	Piston	0.6mm	415-375	3.75mm
			415-400	4.00mm
			415-425	4.25mm
			415-450	4.50mm
			415-475	4.75mm



Designed in conjunction with Antonio De la Cruz, MD, Los Angeles, CA

MEITI Piston

Material	Type	Shaft Dia.	Ref. #	Length
Platinum/Titanium	Piston	0.5mm	418-375	3.75mm
			418-400	4.00mm
			418-425	4.25mm
			418-450	4.50mm
			418-475	4.75mm



Designed in conjunction with Dennis Bojrab, MD and Michael LaRouere, MD, Farmington Hills, MI

Super E Piston

Material	Type	Shaft Dia.	Ref. #	Length
Nitinol / Flpl	Piston	0.5mm	465-375	3.75mm
			465-400	4.00mm
			465-425	4.25mm
			465-450	4.50mm
			465-475	4.75mm
			465-500	5.00mm
		0.6mm	466-375	3.75mm
			466-400	4.00mm
			466-425	4.25mm
			466-450	4.50mm
			466-475	4.75mm
			466-500	5.00mm



Designed in conjunction with Dennis Bojrab, MD, Farmington Hills, MI
 *May not be available in all countries

Sanna Piston

Material	Type	Shaft Dia.	Ref. #	Length
Stainless Steel / Flpl	Piston	0.5mm	410-600	6.00mm



Designed in conjunction with Professor Mario Sanna, Piacenza, Italy

Eclipse Piston

Material	Type	Shaft Dia.	Ref. #	Length	
Nitinol/Flpl	Piston	0.4mm	464-600	6.00mm	
			0.5mm	467-375	3.75mm
				467-400	4.00mm
				467-425	4.25mm
				467-450	4.50mm
				467-475	4.75mm
				467-500	5.00mm
				467-550	5.50mm
				467-600	6.00mm
				0.6mm	468-375
		468-400	4.00mm		
		468-425	4.25mm		
		468-450	4.50mm		
		468-475	4.75mm		
		468-500	5.00mm		
		468-525	5.25mm		
		468-600	6.00mm		



Stapes Prosthesis

Eclipse Piston De la Cruz

Material	Type	Shaft Dia.	Ref. #	Length
Nitinol/Flpl	Piston	0.6mm	469-400	4.00mm
			469-425	4.25mm
			469-450	4.50mm
			469-475	4.75mm

Designed in conjunction with Antonio De la Cruz, MD, Los Angeles, CA



Eclipse Titanium Piston

Material	Type	Shaft Dia.	Ref. #	Length
Nitinol/Titanium	Piston	0.5mm	470-400	4.00mm
			470-425	4.25mm
			470-450	4.50mm
			470-475	4.75mm
		0.6mm	471-400	4.00mm
			471-425	4.25mm
			471-450	4.50mm
			471-475	4.75mm

As suggested by Frank Warren, MD, Portland, OR and Aaron Benson, MD, Toledo, OH



Eclipse Flat Ribbon Eclipse

Material	Type	Shaft Dia.	Ref. #	Length
Nitinol/Flpl	Piston	0.5mm	473-400	4.00mm
			473-425	4.25mm
			473-450	4.50mm
			473-475	4.75mm
			473-500	5.00mm
		0.6mm	472-400	4.00mm
			472-425	4.25mm
			472-450	4.50mm
			472-475	4.75mm
			472-500	5.00mm



Eclipse Malleus Piston

Material	Type	Shaft Dia.	Ref. #	Length
Nitinol/Flpl	Piston	0.6mm	442-550	5.50mm
			442-600	6.00mm
			442-650	6.50mm
			442-700	7.00mm
			442-800	8.00mm

Designed in conjunction with Marcus Atlas, MD, FRACS, Perth, Australia and Michael B. Gluth, MD, Chicago, IL



Eclipse Malleus Piston Measuring Rod

Ref. #	Material
901	Titanium

Designed in conjunction with Marcus Atlas, MD, FRACS, Perth, Australia and Michael B. Gluth, MD, Chicago, IL



Megerian Nitinol SRP

Material	Type	Shaft Dia.	Ref. #	Length
Nitinol/Flpl	Piston	0.6mm	758-400	4.00mm
			758-425	4.25mm
			758-450	4.50mm
			758-475	4.75mm
			758-500	5.00mm

Designed in conjunction with Cliff Megerian, MD, FACS, Cleveland, OH



Stapes Prosthesis

Robinson Bucket Handle

Material	Type	Shaft Dia.	Ref. #	Length
Titanium	Standard	0.4mm	420-350	3.50mm
			420-375	3.75mm
			420-400	4.00mm
			420-425	4.25mm
			420-450	4.50mm
			420-475	4.75mm
			420-500	5.00mm
		0.6mm	422-350	3.50mm
			422-375	3.75mm
			422-400	4.00mm
			422-425	4.25mm
			422-450	4.50mm
			422-475	4.75mm
		0.8mm	424-400	4.00mm
424-425	4.25mm			
424-450	4.50mm			
424-500	5.00mm			



Lippy Bucket Handle

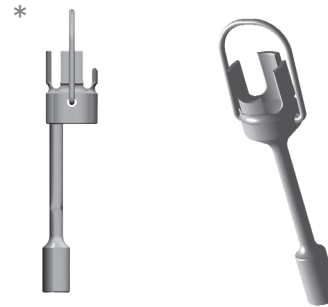
Material	Type	Shaft Dia.	Ref. #	Length
Titanium	Notched	0.4mm	421-350	3.50mm
			421-375	3.75mm
			421-400	4.00mm
			421-425	4.25mm
			421-450	4.50mm
			421-475	4.75mm
			421-500	5.00mm
			421-550	5.50mm
			421-600	6.00mm
			0.6mm	
423-375	3.75mm			
423-400	4.00mm			
423-425	4.25mm			
423-450	4.50mm			
423-475	4.75mm			
423-500	5.00mm			
0.8mm			425-350	3.50mm
			425-375	3.75mm
			425-400	4.00mm
			425-425	4.25mm
			425-450	4.50mm
			425-475	4.75mm
			425-500	5.00mm



Stapes Prosthesis

Bartels Bucket Handle

Material	Type	Shaft Dia.	Ref. #	Length	
Titanium	Adjustable Well	0.4mm	427-350	3.50mm	
			427-375	3.75mm	
			427-400	4.00mm	
			427-425	4.25mm	
			427-450	4.50mm	
			427-475	4.75mm	
			427-500	5.00mm	
		0.6mm	426-350	3.50mm	
			426-375	3.75mm	
			426-400	4.00mm	
			426-425	4.25mm	
			426-450	4.50mm	
			426-475	4.75mm	
			426-500	5.00mm	
		*Offset	0.6mm	428-400	4.00mm
				428-450	4.50mm
				428-500	5.00mm



Designed in conjunction with Loren Bartels, MD, Tampa, FL

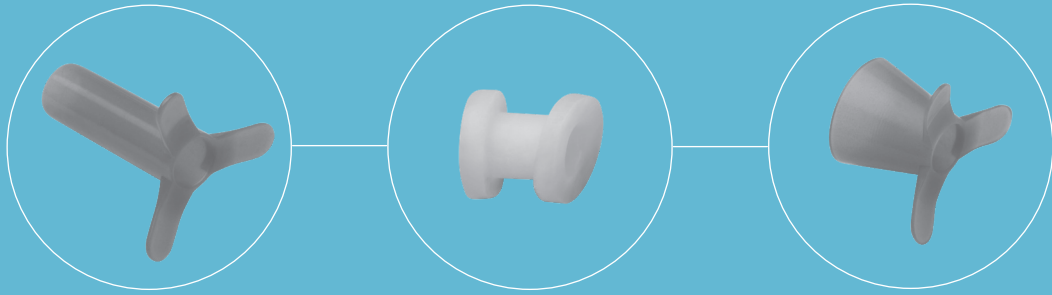
Grace Bucket Handle Offset

Material	Type	Shaft Dia.	Ref. #	Length
Titanium/Ni	Notched	0.4mm	430-400	4.00mm
			430-425	4.25mm
			430-450	4.50mm
			430-475	4.75mm
			430-500	5.00mm
			430-550	5.50mm
			430-600	6.00mm









Ventilation Tubes

Ventilation Tubes

Armstrong R

IF Distance	O.D. Flange	Ref. #	Material	Lumen	Pkg.
1.00mm	2.70mm	520-191	Fluoroplastic	1.14mm	5/Bx
		520-192	Fluoroplastic	1.14mm	10/Bx
		520-193	Fluoroplastic	1.14mm	30/Bx
		520-196	Fluoroplastic	1.14mm	60/Bx
		525-191	Blue Fluoroplastic	1.14mm	5/Bx
		525-192	Blue Fluoroplastic	1.14mm	10/Bx
		525-193	Blue Fluoroplastic	1.14mm	30/Bx
		525-196	Blue Fluoroplastic	1.14mm	60/Bx
0.70mm	2.54mm x 3.81mm	*510-281	Silicone	1.14mm	5/Bx
		*510-281C	PC Silicone	1.14mm	5/Bx
		*510-282	Silicone	1.14mm	10/Bx
		*510-283	Silicone	1.14mm	30/Bx
		*510-286C	PC Silicone	1.14mm	60/Bx
		510-311	Silicone	1.14mm	5/Bx
		510-312	Silicone	1.14mm	10/Bx

*with tab



Modified Armstrong

IF Distance	O.D. Flange	Ref. #	Material	Lumen	Pkg.
1.14mm	2.54mm	525-181	Blue Flpl	1.14mm	5/Bx
		525-183	Blue Flpl	1.14mm	30/Bx
		520-276	White Flpl	1.14mm	60/Bx



Armstrong Beveled Straight

Length	O.D. Flange	Ref. #	Material	Lumen	Pkg.
8.00mm	2.79mm	520-141	Fluoroplastic	1.14mm	5/Bx
		520-142	Fluoroplastic	1.14mm	10/Bx



Bobbin

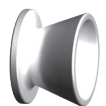
IF Distance	O.D. Flange	Ref. #	Material	Lumen	Pkg.
1.00mm	2.70mm	500-001	Blue Titanium	1.02mm	5/Bx
		500-002	Blue Titanium	1.02mm	10/Bx
		500-011	Blue Titanium	1.14mm	5/Bx
		500-012	Blue Titanium	1.14mm	10/Bx
		500-021	Blue Titanium	1.27mm	5/Bx
		500-022	Blue Titanium	1.27mm	10/Bx
		500-026	Blue Titanium	1.27mm	60/Bx
		*500-021M	Gold Titanium	1.27mm	5/Bx
		*500-022M	Gold Titanium	1.27mm	10/Bx
		520-021	Fluoroplastic	1.02mm	5/Bx
		520-022	Fluoroplastic	1.02mm	10/Bx
		520-026	Fluoroplastic	1.02mm	60/Bx
		520-001	Fluoroplastic	1.14mm	5/Bx
		520-002	Fluoroplastic	1.14mm	10/Bx
		520-003	Fluoroplastic	1.14mm	30/Bx
		525-021	Blue Flpl	1.02mm	5/Bx
		525-001	Blue Flpl	1.14mm	5/Bx
		525-003	Blue Flpl	1.14mm	30/Bx



*Designed in conjunction with Rande Lazar, MD, Memphis, TN

Baxter Beveled Bobbin

IF Distance	O.D. Flange	Ref. #	Material	Lumen	Pkg.
Tapered	2.30mm	520-211	Fluoroplastic	0.97mm	5/Bx
		520-212	Fluoroplastic	0.97mm	10/Bx
	3.00mm	520-221	Fluoroplastic	1.27mm	5/Bx
		520-222	Fluoroplastic	1.27mm	10/Bx
		525-221	Blue Fluoroplastic	1.27mm	5/Bx


Beveled Bobbin

IF Distance	O.D. Flange (mm)	Ref. #	Material	Lumen	Pkg.
0.71mm	(a)3.15 (b)2.79	525-171	Blue Flpl	1.14mm	5/Bx
		525-172	Blue Flpl	1.14mm	10/Bx



Ventilation Tubes

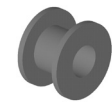
Pediatric Bobbin

IF Distance	O.D. Flange (mm)	Ref. #	Material	Lumen	Pkg.
1.00mm	(a)2.00 (b)1.50	500-061	Blue Titanium	0.78mm	5/Bx
		500-062	Blue Titanium	0.78mm	10/Bx



Sheehy Collar Button

IF Distance	O.D. Flange	Ref. #	Material	Lumen	Pkg.		
1.50mm	3.00mm	520-011	Fluoroplastic	1.27mm	5/Bx		
		520-012	Fluoroplastic	1.27mm	10/Bx		
		520-013	Fluoroplastic	1.27mm	30/Bx		
		520-016	Fluoroplastic	1.27mm	60/Bx		
		525-011	Blue Flpl	1.27mm	5/Bx		
		525-012	Blue Flpl	1.27mm	10/Bx		
		525-016	Blue Flpl	1.27mm	60/Bx		
		2.75mm	2.75mm	510-131	Silicone	1.27mm	5/Bx
				510-131C	PC Silicone	1.27mm	5/Bx
				510-132	Silicone	1.27mm	10/Bx
510-132C	PC Silicone			1.27mm	10/Bx		
510-133	Silicone			1.27mm	30/Bx		
510-133C	PC Silicone			1.27mm	30/Bx		
510-136	Silicone			1.27mm	60/Bx		
510-136C	PC Silicone			1.27mm	60/Bx		
1.30mm	2.75m	510-451	Silicone	1.27mm	5/Bx		
		510-456	Silicone	1.27mm	60/Bx		



Donaldson

IF Distance	O.D. Flange	Ref. #	Material	Lumen	Pkg.
0.76mm	2.30mm	520-051	Fluoroplastic	1.14mm	5/Bx
		520-052	Fluoroplastic	1.14mm	10/Bx
		525-051	Blue Fluoroplastic	1.14mm	5/Bx
		525-052	Blue Fluoroplastic	1.14mm	10/Bx
		*510-001	Silicone	1.14mm	5/Bx
		*510-001C	PC Silicone	1.14mm	5/Bx
		*510-002	Silicone	1.14mm	10/Bx
		*510-003	Silicone	1.14mm	30/Bx
		510-011	Silicone	1.14mm	5/Bx
		510-011C	PC Silicone	1.14mm	5/Bx
		510-012	Silicone	1.14mm	10/Bx
		510-016	Silicone	1.14mm	60/Bx

*with tab


Mini-Reversible

IF Distance	O.D. Flange (mm)	Ref. #	Material	Lumen	Pkg.
1.00mm	(a)2.00 (b)1.70	510-151	Silicone	0.89mm	5/Bx
		510-152	Silicone	0.89mm	10/Bx


Moretz

IF Distance	O.D. Flange (mm)	Ref. #	Material	Lumen	Pkg.
1.00mm	0.86mm	500-121	Blue Titanium	0.76mm	5/Bx
	2.70mm	500-131	Blue Titanium	1.27mm	5/Bx
	2.70mm	500-132	Blue Titanium	1.27mm	10/Bx



Ventilation Tubes

Paparella

IF Distance	O.D. Flange (mm)	Ref. #	Material	Lumen	Pkg.		
1.00mm	(a)2.44 (b)2.16	*510-041	Silicone	1.02mm	5/Bx		
		*510-041C	PC Silicone	1.02mm	5/Bx		
		*510-042	Silicone	1.02mm	10/Bx		
		*510-042C	PC Silicone	1.02mm	10/Bx		
		*510-043	Silicone	1.02mm	30/Bx		
		*510-043C	PC Silicone	1.02mm	30/Bx		
		*510-046	Silicone	1.02mm	60/Bx		
		510-051	Silicone	1.02mm	5/Bx		
		510-051C	PC Silicone	1.02mm	5/Bx		
		510-052	Silicone	1.02mm	10/Bx		
		510-053	Silicone	1.02mm	30/Bx		
		510-053C	PC Silicone	1.02mm	30/Bx		
		510-056	Silicone	1.02mm	60/Bx		
		*510-061	Silicone	1.14mm	5/Bx		
		*510-061C	PC Silicone	1.14mm	5/Bx		
		*510-062	Silicone	1.14mm	10/Bx		
		*510-063	Silicone	1.14mm	30/Bx		
		510-321	Silicone	1.14mm	5/Bx		
		(a)4.14 (b)3.00	(a)4.14 (b)3.00	*510-071	Silicone	1.27mm	5/Bx
				*510-072	Silicone	1.27mm	10/Bx
510-211C	PC Silicone			1.27mm	5/Bx		
510-212C	PC Silicone			1.27mm	10/Bx		
(a)4.23 (b)3.20	(a)4.23 (b)3.20	*510-081	Silicone	1.52mm	5/Bx		
		*510-082	Silicone	1.52mm	10/Bx		
(a)4.57 (b)3.50	(a)4.57 (b)3.50	*510-091	Silicone	2.03mm	5/Bx		
		*510-092	Silicone	2.03mm	10/Bx		
(a)2.64 (b)2.13	(a)2.64 (b)2.13	*520-131	Fluoroplastic	1.02mm	5/Bx		
		*520-132	Fluoroplastic	1.02mm	10/Bx		

*with tab



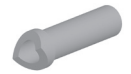
Pope

IF Distance	O.D. Flange (mm)	Ref. #	Material	Lumen	Pkg.
1.00mm	2.50 x 3.50	510-161	Silicone	1.14mm	5/Bx
		510-161C	PC Silicone	1.14mm	5/Bx
		510-162	Silicone	1.14mm	10/Bx
1.10mm	2.60 x 2.60	530-001	Polyethylene	1.14mm	5/Bx
		530-003	Polyethylene	1.14mm	30/Bx



Razrbac

Length	O.D. Flange	Ref. #	Material	Lumen	Pkg.
4.00mm	1.80mm	500-110	Blue Titanium	1.14mm	5/Bx



Designed in conjunction with John Dornhoffer, MD, Little Rock, AR

Reuter Bobbin

IF Distance	O.D. Flange	Ref. #	Material	Lumen	Pkg.
1.01mm	2.70mm	*500-101	Blue Titanium	1.14mm	5/Bx
0.86mm	2.79mm	525-161	Blue Flpl	1.00mm	5/Bx
		525-162	Blue Flpl	1.00mm	10/Bx
0.93mm	2.80mm	*520-181	Fluoroplastic	1.14mm	5/Bx
		*520-182	Fluoroplastic	1.14mm	10/Bx
		*520-186	Fluoroplastic	1.14mm	60/Bx



*with holes

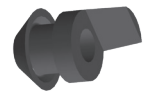
Rube

IF Distance	Flange Length	Ref. #	Material	Lumen	Pkg.
1.00mm	6.60mm	510-181	Silicone	1.14mm	5/Bx
		510-181C	PC Silicone	1.14mm	5/Bx
		510-191	Silicone	1.27mm	5/Bx



Shea Parasol

IF Distance	O.D. Flange	Ref. #	Material	Lumen	Pkg.
0.81mm	1.47mm	*510-261	Silicone	1.02mm	5/Bx
		*510-262	Silicone	1.02mm	10/Bx



*with tab

Simon Hannah Bobbin

IF Distance	O.D. Flange	Ref. #	Material	Lumen	Pkg.
0.78mm	2.54mm	500-081	Gold Titanium	1.14mm	5/Bx



Designed in conjunction with Louis Chanin, MD, Memphis, TN

Ventilation Tubes

Shepard Grommet

IF Distance	O.D. Flange	Ref. #	Material	Lumen	Pkg.
1.60mm	2.30mm	*510-021	Silicone	1.02mm	5/Bx
		*510-021C	PC Silicone	1.02mm	5/Bx
		*510-022	Silicone	1.02mm	10/Bx
		*510-031	Silicone	1.14mm	5/Bx
		*510-032	Silicone	1.14mm	10/Bx
		510-231	Silicone	1.02mm	5/Bx
		*520-031	Fluoroplastic	1.02mm	5/Bx
		*520-032	Fluoroplastic	1.02mm	10/Bx
		*520-041	Fluoroplastic	1.14mm	5/Bx
		*520-042	Fluoroplastic	1.14mm	10/Bx
		*525-041	Blue Fpl	1.14mm	5/Bx
		*525-043	Blue Fpl	1.14mm	30/Bx
		520-111	Fluoroplastic	1.02mm	5/Bx
		520-112	Fluoroplastic	1.02mm	10/Bx
		520-113	Fluoroplastic	1.02mm	30/Bx
		520-116	Fluoroplastic	1.02mm	60/Bx
		525-111	Blue Fpl	1.02mm	5/Bx
		525-111W	Blue Fpl (w/wire)	1.02mm	5/Bx
		525-113	Blue Fpl	1.02mm	30/Bx
		520-121	Fluoroplastic	1.14mm	5/Bx
		520-122	Fluoroplastic	1.14mm	10/Bx
		525-121	Blue Fpl	1.14mm	5/Bx
		525-121W	Blue Fpl (w/wire)	1.14mm	5/Bx
		525-123	Blue Fpl	1.14mm	30/Bx
		525-123W	Blue Fpl (w/wire)	1.14mm	30/Bx
		525-126	Blue Fpl	1.14mm	60/Bx
		525-126W	Blue Fpl (w/wire)	1.14mm	60/Bx

*with tab



Spoon Bobbin

IF Distance	O.D. Flange (mm)	Ref. #	Material	Lumen	Pkg.
1.00mm	(a)3.45 (b)2.60	500-031	Blue Titanium	1.02mm	5/Bx
		500-032	Blue Titanium	1.02mm	10/Bx
		500-041	Blue Titanium	1.14mm	5/Bx
		500-042	Blue Titanium	1.14mm	10/Bx
		500-051	Blue Titanium	1.27mm	5/Bx
		500-052	Blue Titanium	1.27mm	10/Bx



Straight

Flange OD	Length	Ref. #	Material	Lumen	Pkg.
2.30mm	7.00mm	520-061	Fluoroplastic	0.9mm	5/Bx
	7.00mm	520-062	Fluoroplastic	0.9mm	10/Bx
	12.00mm	520-071	Fluoroplastic	0.9mm	5/Bx
	12.00mm	520-072	Fluoroplastic	0.9mm	10/Bx
	7.00mm	520-081	Fluoroplastic	1.14mm	5/Bx
	7.00mm	520-082	Fluoroplastic	1.14mm	10/Bx
	12.00mm	520-091	Fluoroplastic	1.14mm	5/Bx
	12.00mm	520-092	Fluoroplastic	1.14mm	10/Bx



T-Tube

Length	Flange Length	Ref. #	Material	Lumen	Pkg.
12.00mm	9.80mm	510-101	Silicone	1.14mm	5/Bx
		510-101C	PC Silicone	1.14mm	5/Bx
		510-102	Silicone	1.14mm	10/Bx



Modified T-Tube

Length	Flange Length	Ref. #	Material	Lumen	Pkg.
6.00mm	7.60mm	510-111	Silicone	1.27mm	5/Bx
		510-111C	PC Silicone	1.27mm	5/Bx
		510-112	Silicone	1.27mm	10/Bx



Tapervent

IF Distance	O.D. Flange (mm)	Ref. #	Material	Lumen	Pkg.
1.17mm	(a)4.20 (b)2.54	510-141	Silicone	1.14mm	5/Bx
		510-141C	PC Silicone	1.14mm	5/Bx
		510-142	Silicone	1.14mm	10/Bx
	(a)4.50 (b)2.72	510-171	Silicone	1.27mm	5/Bx
		510-171C	PC Silicone	1.27mm	5/Bx
		510-172	Silicone	1.27mm	10/Bx
		510-173	Silicone	1.27mm	30/Bx



Ventilation Tubes

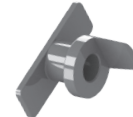
Tiny Tef

IF Distance	O.D. Flange (mm)	Ref. #	Material	Lumen	Pkg.
1.00mm	(a)2.00 (b)1.50	520-151	Fluoroplastic	0.76mm	5/Bx
		520-152	Fluoroplastic	0.76mm	10/Bx



Touma

IF Distance	Flange Length	Ref. #	Material	Lumen	Pkg.
1.10mm	4.80mm	510-501	Silicone	1.14mm	5/Bx
		510-501C	PC Silicone	1.14mm	5/Bx



Triune

Length	Flange Length	Ref. #	Material	Lumen	Pkg.
5.00mm	2.00mm	510-121	Silicone	1.35mm	5/Bx
		510-121C	PC Silicone	1.35mm	5/Bx
		510-122	Silicone	1.35mm	10/Bx
		510-123	Silicone	1.35mm	30/Bx



Designed in conjunction with Frank Hill, MD, Columbia, SC

Tiny Triune

Length	Flange Length	Ref. #	Material	Lumen	Pkg.
3.81mm	1.60mm	510-251	Silicone	0.76mm	5/Bx
		510-251C	PC Silicone	0.76mm	5/Bx
		510-252	Silicone	0.76mm	10/Bx



Designed in conjunction with Frank Hill, MD, Columbia, SC
Suggested by Dennis Bojrab, MD, Farmington Hills, MI

Triune Trumpet

Length	Flange Length	Ref. #	Material	Lumen	Pkg.
2.45mm	2.35mm	510-301	Silicone	1.27mm	5/Bx
		510-302	Silicone	1.27mm	10/Bx



Designed in conjunction with Frank Hill, MD, Columbia, SC



Myringotomy Blades

Tympanoplasty Blades

Ref. # 930-011	Angled 60 degrees, 2.5mm wide, blade only*
----------------	--



Ref. # 930-022	Straight, 2.5mm wide, blade only*
----------------	-----------------------------------



Flat Stock Knives and Blades - Myringotomy

Ref. # 930-001	Lance - adult size, angled with round handle
----------------	--



Ref. # 930-002	Lance - juvenile size, angled with round handle
----------------	---



Ref. # 930-003	Spear - juvenile size, angled with round handle
----------------	---



Ref. # 930-008	Lance - adult size, angled - blade only*
----------------	--



Ref. # 930-009	Lance - juvenile size, angled, blade only*
----------------	--



Ref. # 930-010	Spear - juvenile size, angled - blade only*
----------------	---



Ref. # 930-020	Sickle flat blade with flat handle
----------------	------------------------------------



Ref. # 930-021	Lance flat blade with flat handle
----------------	-----------------------------------



Round Stock Knives and Blades - Myringotomy

Ref. # 930-004	Lance - juvenile size, straight with handle
----------------	---



Ref. # 930-007	Sickle - straight with handle
----------------	-------------------------------



Ref. # 930-014	Tapered - straight edge, upward cut, blade only***
----------------	--



Ref. # 930-015	Tapered - straight edge, downward cut, blade only***
----------------	--



Ref. # 930-016	Spear - angled - blade only***
----------------	--------------------------------



Handles * matches blade with handle

Ref. # 930-017	*handle, 10cm
----------------	---------------



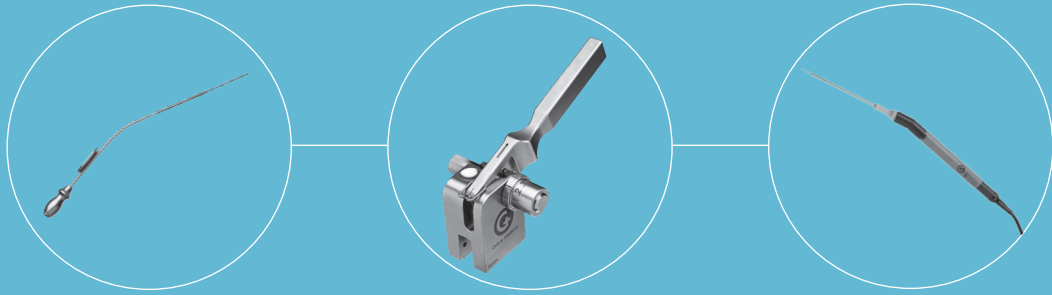
Ref. # 930-018	**handle, 10cm
----------------	----------------



Ref. # 930-019	***handle, 10cm
----------------	-----------------







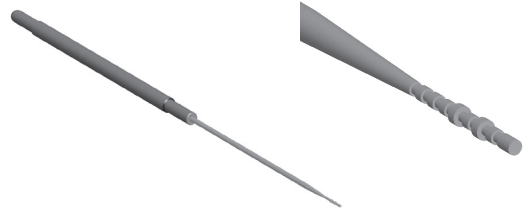
Specialty Products

*May not be available in all countries

Specialty Products

Malleable Measuring Rod

Ref. #	Material	Length
915	Titanium	18.40cm



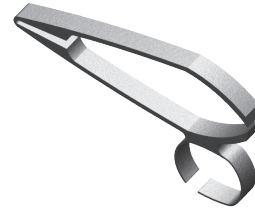
Sliding Measuring Rod

Ref. #	Material	Length
905	Stainless Steel & Aluminum	19.50cm



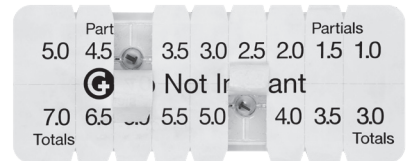
ALTO Cutter

Ref. #	Material	Length	Jaw Width
910	Stainless Steel	7.90cm	6.30mm



Disposable Sizer Tray

Ref. #	Pkg.
966	10/Bx



FeatherVac

Ref. #	Description
906-001	FeatherVac Reusable Suction
906-002	FeatherVac Disposable Stapes Seat (5/bx)

Designed in conjunction with Robert F. Labadie, MD, PhD, FACS, Vanderbilt University, Nashville, TN



Cartilage Microtome

Ref. #	Description
990-001	Cartilage Microtome
990-002	Cartilage Microtome Blades (6/bx)



McMenomey Reverse Alligator Forceps

Ref. #	Description
908	Reverse Jaw Action, Delicate, Straight, Serrated, 0.8mm x 4.0mm

Designed in conjunction with Sean McMenomey, MD, New York, NY



Specialty Products

Bojrab Tympanoplasty Dissector Set

Ref. #	Description
999-DB1	Bojrab Dissector, Large, Angled 20°, 2.2mm x 2.0mm, L 165mm
999-DB2	Bojrab Dissector, Medium, Angled 20°, 1.1mm x 2.0mm, L 165mm
999-DB3	Bojrab Dissector, Small, Angled 20°, 0.55mm x 2.0mm, L 165mm
999-DB4	Bojrab Dissection Needle, Angled 20°, 2.0mm, L 165mm
999-DB5	Bojrab Dissector, Large, Angled 90°, 0.5mm x 3.5mm, L 165mm
999-DB6	Bojrab Dissector, Medium, Angled 90°, 0.5mm x 2.5mm, L 165mm
999-DB7	Bojrab Dissector, Small, Angled 90°, 0.5mm x 1.5mm, L 165mm
999-DB8	Bojrab Dissection Round Knife, Angled 45°, 2.5mm Ø, L 165M
999-DB9	Bojrab Dissection Sickle Knife, 5.0mm Curved Blade, L 165M

Designed in conjunction with Dennis Bojrab, MD, Farmington Hills, MI



Carlson-Haynes Universal Otologic Retractor

Ref. #	Description
991-MC1	Carlson-Haynes Universal Otologic Retractor

Designed in conjunction with Matthew L. Carlson, MD, Rochester, MN
and David S. Haynes, MD, Nashville, TN



ENDO-EAR Endoscopic Instruments

Suction Dissectors

Ref. #	Description
999-101	Rivas Suction Elevator
999-102	Suction Round Knife, 1.0mm Ø*
999-103	Suction Round Knife, 1.5mm Ø
999-104	Suction Dissector, Angled 45°
999-105	Suction Dissector, Angled 90°
999-106	Suction Dissector, Angled 110°
999-107	Suction Dissector for Ear Drum
999-108	Suction Dissector for Sinus Tympani
999-199	Sterilization Tray
10-851-00	Suction Adapter, Rotatable 360°

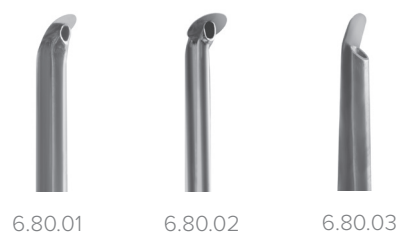
Designed in conjunction with Alejandro A. Rivas, MD, Nashville, TN



Suction Dissectors with 360° Integrated Rotation

Ref. #	Description
6.80.01	Lee No. 1 Suction Dissector, 2.0mm Round, 1.0mm Suction to Tip
6.80.02	Lee No. 2 Suction Dissector, 2.5mm Round, 1.0mm Suction to Tip
6.80.03	Lee No. 3 Suction Dissector, 1.0 x 1.5mm Round, 1.5mm Suction to Tip
EE-1001	ENDO-EAR Instrument Sterilization Tray

Designed in conjunction with Daniel Lee, MD, FACS, Boston, MA



Specialty Products

Double-Ended Dissectors

Ref. #	Description
6.80.07	Lee No. 7 Dissector, 3mm and 5mm Blades
6.80.08	Lee No. 8 Dissector, Right and Left Curved Blades
6.80.09	Lee No. 9 Dissector, Short and Long 1.0mm Paddles
6.80.10	Lee No. 10 Dissector, Short and Long 1.5mm Paddles

Designed in conjunction with Daniel Lee, MD, FACS, Boston, MA



Suctions with 360° Integrated Rotation

Ref. #	Description
1.80.24	Straight, 24 Ga
1.80.20	Straight, 20 Ga
1.80.03	Straight, 3 Fr
1.80.05	Straight, 5 Fr
1.80.07	Straight, 7 Fr
1.81.24	Short Curve, 24 Ga, Up
1.81.20	Short Curve, 20 Ga, Up
1.81.03	Short Curve, 3 Fr, Up
1.81.05	Short Curve, 5 Fr, Up
1.82.24	Short Curve, 24 Ga, Down
1.82.20	Short Curve, 20 Ga, Down
1.82.03	Short Curve, 3 Fr, Down
1.82.05	Short Curve, 5 Fr, Down
1.83.20	Medium Curve, 20 Ga, Up
1.83.03	Medium Curve, 3 Fr, Up
1.83.05	Medium Curve, 5 Fr, Up
1.84.20	Medium Curve, 20 Ga, Down
1.84.03	Medium Curve, 3 Fr, Down
1.84.05	Medium Curve, 5 Fr, Down
1.85.20	Long Curve, 20 Ga, Up
1.85.03	Long Curve, 3 Fr, Up
1.86.20	Long Curve, 20 Ga, Down
1.86.03	Long Curve, 3 Fr, Down



High-Definition Endoscopes

Ref. #	Description
EE-0300	ENDO-EAR Endoscope, 3mm x 150mm, 0 Degree
EE-0330	ENDO-EAR Endoscope, 3mm x 150mm, 30 Degree
EE-0345	ENDO-EAR Endoscope, 3mm x 150mm, 45 Degree
EE-0370	ENDO-EAR Endoscope, 3mm x 150mm, 70 Degree
EE-1000	ENDO-EAR Endoscope Sterilization Tray



Specialty Products

Dragonfly Surgical Drill System

Ref. #	Description
950-001	Surgical Drill System
950-002	Handpiece
950-003	Footswitch
950-004	Rechargeable Batteries
950-005	Battery Charger
950-006-15	Angled Adaptor, 15°
950-006-25	Angled Adaptor, 25°
950-006-35	Angled Adaptor, 35°
950-007	Sterilization Tray



Dragonfly Burs

Diamond Burs

Ref. #	Description
951-95-004	0.4mm, 95mm L, Diamond
951-95-005	0.5mm, 95mm L, Diamond
951-95-006	0.6mm, 95mm L, Diamond
951-95-007	0.7mm, 95mm L, Diamond
951-95-008	0.8mm, 95mm L, Diamond
951-95-010	1.0mm, 95mm L, Diamond
951-95-014	1.4mm, 95mm L, Diamond
951-95-018	1.8mm, 95mm L, Diamond
951-95-023	2.3mm, 95mm L, Diamond
951-95-010-SL	1.0mm, 95mm L, Diamond w/ Burshield
951-95-014-SL	1.4mm, 95mm L, Diamond w/ Burshield
951-95-018-SL	1.8mm, 95mm L, Diamond w/ Burshield
951-95-023-SL	2.3mm, 95mm L, Diamond w/ Burshield

Carbide Burs

Ref. #	Description
952-80-004-SL	0.4mm, 80mm L, Carbide w/ Burshield
952-80-005-SL	0.5mm, 80mm L, Carbide w/ Burshield
952-80-006-SL	0.6mm, 80mm L, Carbide w/ Burshield
952-80-007-SL	0.7mm, 80mm L, Carbide w/ Burshield
952-80-008-SL	0.8mm, 80mm L, Carbide w/ Burshield
952-80-010-SL	1.0mm, 80mm L, Carbide w/ Burshield
952-80-014-SL	1.4mm, 80mm L, Carbide w/ Burshield
952-80-018-SL	1.8mm, 80mm L, Carbide w/ Burshield
952-80-023-SL	2.3mm, 80mm L, Carbide w/ Burshield

Specialty Burs

Ref. #	Description
953-80-018-SL	1.8mm, 80mm L, Egg w/ Burshield
953-80-023-SL	2.3mm, 80mm L, Egg w/ Burshield
954-80-018-SL	1.8mm, 80mm L, Cylinder w/ Burshield
955-95-0035	0.35mm, 80mm L, Trocar Perforator

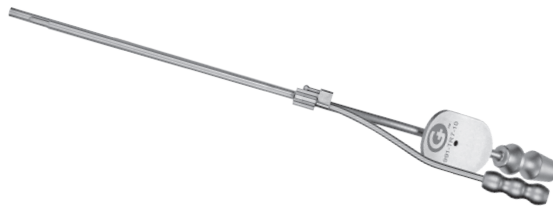


Specialty Products

Roland Directional Suction Irrigators

Ref. #	Description
991-TR5-8	Roland Directional Suction Irrigator, 5FR. x 8cm
991-TR5-10	Roland Directional Suction Irrigator, 5FR. x 10cm
991-TR7-8	Roland Directional Suction Irrigator, 7FR. x 8cm
991-TR7-10	Roland Directional Suction Irrigator, 7FR. x 10m
991-TR10-8	Roland Directional Suction Irrigator, 10FR. x 8cm
991-TR12-8	Roland Directional Suction Irrigator, 12FR. x 8cm

Designed in conjunction with Thomas Roland, MD, New York, NY



Disposable ENT Procedure Pack

Ref. #	Description
SSP-150	<p>Disposable ENT Procedure Pack (10 packs/bx)</p> <p>Each sterile pack includes 1 each: Hartmann Forceps, Aural Speculum Rosen Size 1-3mm, Aural Speculum Rosen Size 3-5mm, Aural Speculum Rosen Size 4-6mm, Cawthorne Hook 90° 3mm, Cawthorne Needle Straight, Probe Jobson Horne, Suction Cannula w/ House Adaptor 13G, Suction Cannula w/ House Adaptor 14G, Suction Cannula w/ House Adaptor 16G, Suction Cannula w/ House Adaptor 19G</p>

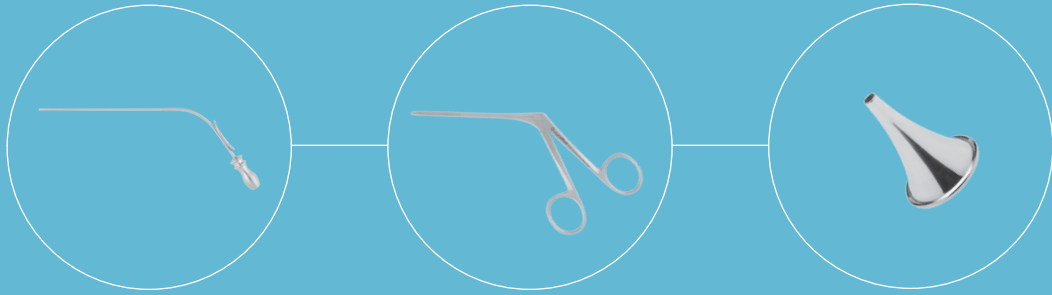


ProCem Surgical Cement

Ref. #	Description
986-001	ProCem Otologic Cement
986-002	ProCem Applicator
986-003	ProCem Activator
986-004	ProCem Amalgamator







Office Instruments

*May not be available in all countries

Baron Suction Tubes

Ref. #	Description
1.00.13	Baron Suction, 3 Fr
1.00.14	Baron Suction, 4 Fr
1.00.15	Baron Suction, 5 Fr
1.00.16	Baron Suction, 6 Fr
1.00.17	Baron Suction, 7 Fr
1.01.13	Baron Suction, 3 Fr, Light Angle
1.01.15	Baron Suction, 5 Fr, Light Angle
1.01.17	Baron Suction, 7 Fr, Light Angle
1.02.13	Baron Suction, 3 Fr, 90mm WL
1.02.15	Baron Suction, 5 Fr, 90mm WL
1.02.17	Baron Suction, 7 Fr, 90mm WL



House Cut-Off Adapter

Ref. #	Description
1.02.11	House Cut-Off Adapter



Curved Sinus Suction

Ref. #	Description
1.04.01	Curved Sinus Suction, 2.5mm, Short
1.04.02	Curved Sinus Suction, 2.5mm, Long
1.04.02M	Curved Sinus Suction, 2.5mm, Long, Malleable
1.04.03	Curved Sinus Suction, 3.0mm, Short
1.04.04	Curved Sinus Suction, 3.0mm, Long
1.04.04M	Curved Sinus Suction, 3.0mm, Long, Malleable
1.04.05	Curved Sinus Suction, 4.0mm, Short
1.04.06	Curved Sinus Suction, 4.0mm, Long
1.04.06M	Curved Sinus Suction, 4.0mm, Long, Malleable



Curved Sinus Suction

Ref. #	Description
1.04.11	Curved Sinus Suction, Olive-Tip, Frazier Handle, 8 Fr, Short
1.04.12	Curved Sinus Suction, Olive-Tip, Frazier Handle, 8 Fr, Long
1.04.13	Curved Sinus Suction, Olive-Tip, Frazier Handle, 10 Fr, Short
1.04.14	Curved Sinus Suction, Olive-Tip, Frazier Handle, 10 Fr, Long
1.04.15	Curved Sinus Suction, Olive-Tip, Frazier Handle, 12 Fr, Short
1.04.16	Curved Sinus Suction, Olive-Tip, Frazier Handle, 12 Fr, Long



Andrews-Pynchon Suction

Ref. #	Description
1.06.01	Andrews-Pynchon Suction



Yankauer Suction

Ref. #	Description
1.07.01	Yankauer Suction



Barnes Hospital Suction

Ref. #	Description
1.09.09	Barnes Hospital Suction Tube, 9 Fr



Schuknecht Suction

Ref. #	Description
1.11.20	Schuknecht Suction, 20 Gauge
1.11.22	Schuknecht Suction, 22 Gauge
1.11.24	Schuknecht Suction, 24 Gauge



Office Instruments

Rosen Suction

Ref. #	Description
1.12.14	Rosen Suction, 14 Gauge (2.08mm OD)
1.12.15	Rosen Suction, 15 Gauge (1.82mm OD)
1.12.16	Rosen Suction, 16 Gauge (1.64mm OD)
1.12.17	Rosen Suction, 17 Gauge (1.46mm OD)
1.12.18	Rosen Suction, 18 Gauge (1.26mm OD)
1.12.19	Rosen Suction, 19 Gauge (1.05mm OD)
1.12.20	Rosen Suction, 20 Gauge (0.90mm OD)
1.12.22	Rosen Suction, 22 Gauge (0.71mm OD)
1.12.24	Rosen Suction, 24 Gauge (0.56mm OD)
1.12.26	Rosen Suction, 26 Gauge (0.46mm OD)



Frazier-Ferguson Suction

Ref. #	Description
1.13.06	Frazier-Ferguson Suction, 6 Fr
1.13.07	Frazier-Ferguson Suction, 7 Fr
1.13.08	Frazier-Ferguson Suction, 8 Fr
1.13.09	Frazier-Ferguson Suction, 9 Fr
1.13.10	Frazier-Ferguson Suction, 10 Fr
1.13.11	Frazier-Ferguson Suction, 11Fr
1.13.12	Frazier-Ferguson Suction, 12 Fr
1.13.13	Frazier-Ferguson Suction, 13 Fr
1.13.14	Frazier-Ferguson Suction, 14 Fr



Bishop-Harmon Forceps

Ref. #	Description
2.00.01	Bishop-Harmon Forceps, Standard, Serrated
2.00.02	Bishop-Harmon Forceps, Standard, 1x2 Teeth



Adson Tissue Forceps

Ref. #	Description
2.01.01	Adson Tissue Forceps, Serrated, 12cm, Micro
2.01.02	Adson Tissue Forceps, Serrated, 12cm, Standard
2.03.01	Adson Tissue Forceps, 1x2 Teeth, 12cm, Micro
2.03.02	Adson Tissue Forceps, 1x2 Teeth, 12cm, Standard
2.04.01	Adson-Brown Tissue Forceps, 12cm, 9x9 Teeth



Hemostatic Forceps

Ref. #	Description
2.05.01	Hartmann Hemostatic Forceps, 10cm, Straight
2.05.02	Hartmann Hemostatic Forceps, 10cm, Curved
2.06.01	Halstead-Mosquito Hemostatic Forceps, 12.5cm, Straight
2.06.02	Halstead-Mosquito Hemostatic Forceps, 12.5cm, Curved
2.07.01	Crile Hemostatic Forceps, 14cm, Straight
2.07.02	Crile Hemostatic Forceps, 14cm, Curved
2.08.01	Schmidt Tonsil Hemostatic Forceps, 19cm, Curved, Light
2.08.02	Schmidt Tonsil Hemostatic Forceps, 19cm, Curved, Strong
2.09.01	Kelly Hemostatic Forceps, 14cm, Straight
2.09.02	Kelly Hemostatic Forceps, 14cm, Curved



Towel Forceps

Ref. #	Description
2.10.01	Backhaus Towel Forceps, 8cm



Scissors

Ref. #	Description
2.31.01	Mayo Scissors, 14.5cm, Straight
2.31.02	Mayo Scissors, 14.5cm, Curved
2.32.01	Metzenbaum Scissors, 18cm, Straight
2.32.02	Metzenbaum Scissors, 18cm, Curved
2.32.12	Metzenbaum Scissors, Baby, 11.5cm, Curved
2.33.01	Iris Scissors, Sharp, 10.5cm, Straight
2.33.02	Iris Scissors, Sharp, 10.5cm, Curved
2.34.01	Stevens Scissors, Sharp, 9.5cm, Straight
2.34.02	Stevens Scissors, Sharp, 9.5cm, Curved
2.35.01	Stevens Scissors, Blunt, 9.5cm, Straight
2.35.02	Stevens Scissors, Blunt, 9.5cm, Curved
2.36.01	Spencer Stitch Scissors, 10.5cm
2.36.11	Ribbon Stitch Scissors
2.37.01	Lister Bandage Scissors, 11cm



Office Instruments

Needle Holders

Ref. #	Description
2.66.01	Halsey Needle Holder, 13cm, Smooth
2.66.02	Halsey Needle Holder, 13cm, Serrated
2.67.01	Halsey Needle Holder, TC Inserts, 13cm, Smooth
2.67.02	Halsey Needle Holder, TC Inserts, 13cm, Serrated



Skin Hooks

Ref. #	Description
2.80.01	Joseph Skin Hook, Single
2.80.02	Joseph Skin Hook, Double, 2mm
2.80.03	Joseph Skin Hook, Double, 5mm
2.80.04	Joseph Skin Hook, Double, 7mm
2.80.05	Joseph Skin Hook, Double, 10mm



Retractors

Ref. #	Description
2.81.01	Senn-Miller Retractor, Sharp
2.81.02	Senn-Miller Retractor, Blunt



Knife Handle

Ref. #	Description
2.90.01	Knife Handle, #3
2.90.02	Knife Handle, #7



Hartmann Ear Speculum

Ref. #	Description
6.00.01	Hartmann Ear Specula, Ebonized, 3.0mm
6.00.02	Hartmann Ear Specula, Ebonized, 4.0mm
6.00.03	Hartmann Ear Specula, Ebonized, 5.0mm
6.00.04	Hartmann Ear Specula, Ebonized, 7.0mm



Hartmann Ear Speculum

Ref. #	Description
6.01.01	Hartmann Ear Specula, Pediatric, 2.0mm
6.02.01	Hartmann Ear Specula, 3.5mm
6.02.02	Hartmann Ear Specula, 5.0mm
6.02.03	Hartmann Ear Specula, 6.5mm
6.02.04	Hartmann Ear Specula, 8.0mm



Toynbee Ear Speculum

Ref. #	Description
6.03.01	Toynbee Ear Specula, 3.0mm
6.03.02	Toynbee Ear Specula, 4.0mm
6.03.03	Toynbee Ear Specula, 5.0mm
6.03.04	Toynbee Ear Specula, 6.5mm



Boucheron Ear Speculum

Ref. #	Description
6.04.01	Boucheron Ear Specula, 3.5mm
6.04.02	Boucheron Ear Specula, 4.5mm
6.04.03	Boucheron Ear Specula, 5.5mm
6.04.04	Boucheron Ear Specula, 6.5mm



Gruber Ear Speculum

Ref. #	Description
6.05.00	Gruber Ear Specula, Oval, Child, 1.4 x 2.0mm
6.05.01	Gruber Ear Specula, Oval, Child, 2.1 x 2.7mm
6.05.02	Gruber Ear Specula, Oval, Child, 4.6 x 5.6mm
6.05.03	Gruber Ear Specula, Oval, Adult, 1.6 x 2.4mm
6.05.04	Gruber Ear Specula, Oval, Adult, 2.4 x 3.2mm
6.05.05	Gruber Ear Specula, Oval, Adult, 3.2 x 4.7mm
6.05.06	Gruber Ear Specula, Oval, Adult, 4.0 x 5.5mm



Gruber Ear Speculum

Ref. #	Description
6.05.10	Gruber Ear Specula, Round, Child, 2.0mm
6.05.11	Gruber Ear Specula, Round, Child, 2.6mm
6.05.12	Gruber Ear Specula, Round, Child, 3.3mm
6.05.13	Gruber Ear Specula, Round, Adult, 2.0mm
6.05.14	Gruber Ear Specula, Round, Adult, 2.9mm
6.05.15	Gruber Ear Specula, Round, Adult, 3.9mm
6.05.16	Gruber Ear Specula, Round, Adult, 4.9mm



Farrior Ear Speculum

Ref. #	Description
6.06.30	Farrior Ear Specula, Ebonized, 3.0 x 4.0mm
6.06.35	Farrior Ear Specula, Ebonized, 3.5 x 4.5mm
6.06.40	Farrior Ear Specula, Ebonized, 4.0 x 5.0mm
6.06.45	Farrior Ear Specula, Ebonized, 4.5 x 5.5mm
6.06.50	Farrior Ear Specula, Ebonized, 5.0 x 6.0mm
6.06.55	Farrior Ear Specula, Ebonized, 5.5 x 6.5mm
6.06.60	Farrior Ear Specula, Ebonized, 6.0 x 7.0mm
6.06.65	Farrior Ear Specula, Ebonized, 6.5 x 7.5mm
6.06.70	Farrior Ear Specula, Ebonized, 7.0 x 8.0mm
6.06.75	Farrior Ear Specula, Ebonized, 7.5 x 8.5mm



Farrior Ear Speculum

Ref. #	Description
6.08.11	Farrior Ear Specula, Round, 3.3mm
6.08.12	Farrior Ear Specula, Round, 4.3mm
6.08.13	Farrior Ear Specula, Round, 4.8mm
6.08.14	Farrior Ear Specula, Round, 5.3mm
6.08.15	Farrior Ear Specula, Round, 5.8mm
6.08.16	Farrior Ear Specula, Round, 6.3mm
6.08.17	Farrior Ear Specula, Round, 6.8mm
6.08.18	Farrior Ear Specula, Round, 7.3mm
6.08.19	Farrior Ear Specula, Round, 7.8mm



Farrior Ear Speculum

Ref. #	Description
6.08.21	Farrior Ear Specula, Oval, 3.0 x 4.0mm
6.08.22	Farrior Ear Specula, Oval, 4.0 x 5.0mm
6.08.23	Farrior Ear Specula, Oval, 4.5 x 5.5mm
6.08.24	Farrior Ear Specula, Oval, 5.0 x 6.0mm
6.08.25	Farrior Ear Specula, Oval, 5.5 x 6.5mm
6.08.26	Farrior Ear Specula, Oval, 6.0 x 7.0mm
6.08.27	Farrior Ear Specula, Oval, 6.5 x 7.5mm
6.08.28	Farrior Ear Specula, Oval, 7.0 x 8.0mm
6.08.29	Farrior Ear Specula, Oval, 7.5 x 8.5mm



Farrior Ear Speculum

Ref. #	Description
6.08.31	Farrior Ear Specula, Oval-Oblique, 3.0 x 4.0mm
6.08.32	Farrior Ear Specula, Oval-Oblique, 4.0 x 5.0mm
6.08.33	Farrior Ear Specula, Oval-Oblique, 4.5 x 5.5mm
6.08.34	Farrior Ear Specula, Oval-Oblique, 5.0 x 6.0mm
6.08.35	Farrior Ear Specula, Oval-Oblique, 5.5 x 6.5mm
6.08.36	Farrior Ear Specula, Oval-Oblique, 6.0 x 7.0mm
6.08.37	Farrior Ear Specula, Oval-Oblique, 6.5 x 7.5mm
6.08.38	Farrior Ear Specula, Oval-Oblique, 7.0 x 8.0mm
6.08.39	Farrior Ear Specula, Oval-Oblique, 7.5 x 8.5mm



Bruenings

Ref. #	Description
6.07.11	Bruenings Rubber Bulb and Tubing with connector
6.07.12	Bruenings Tubing Connector
6.07.13	Bruenings Head, Full Lens, Non-Magnifying
6.07.14	Bruenings Head, Full Lens, Magnifying
6.07.15	Bruenings Head, Segmented Lens, Non-Magnifying
6.07.16	Bruenings Head, Segmented Lens, Magnifying



Office Instruments

Buck Ear Curette

Ref. #	Description
6.11.000	Buck Ear Curette, Blunt, Straight, 1.0mm, #00
6.11.00	Buck Ear Curette, Blunt, Straight, 1.5mm, #0
6.11.01	Buck Ear Curette, Blunt, Straight, 2.0mm, #1
6.11.02	Buck Ear Curette, Blunt, Straight, 2.5mm, #2
6.11.03	Buck Ear Curette, Blunt, Straight, 3.0mm, #3
6.11.100	Buck Ear Curette, Blunt, Angled, 1.0mm, #00
6.11.10	Buck Ear Curette, Blunt, Angled, 1.5mm, #0
6.11.11	Buck Ear Curette, Blunt, Angled, 2.0mm, #1
6.11.12	Buck Ear Curette, Blunt, Angled, 2.5mm, #2
6.11.13	Buck Ear Curette, Blunt, Angled, 3.0mm, #3
6.11.200	Buck Ear Curette, Sharp, Straight, 1.0mm, #00
6.11.20	Buck Ear Curette, Sharp, Straight, 1.5mm, #0
6.11.21	Buck Ear Curette, Sharp, Straight, 2.0mm, #1
6.11.22	Buck Ear Curette, Sharp, Straight, 2.5mm, #2
6.11.23	Buck Ear Curette, Sharp, Straight, 3.0mm, #3
6.11.300	Buck Ear Curette, Sharp, Angled, 1.0mm, #00
6.11.30	Buck Ear Curette, Sharp, Angled, 1.5mm, #0
6.11.31	Buck Ear Curette, Sharp, Angled, 2.0mm, #1
6.11.32	Buck Ear Curette, Sharp, Angled, 2.5mm, #2
6.11.33	Buck Ear Curette, Sharp, Angled, 3.0mm, #3



Shapleigh Ear Curette

Ref. #	Description
6.12.01	Shapleigh Ear Curette, Small
6.12.02	Shapleigh Ear Curette, Large



Billeau Ear Loop

Ref. #	Description
6.13.00	Billeau Ear Loop, Fig. 0
6.13.01	Billeau Ear Loop, Fig. 1
6.13.02	Billeau Ear Loop, Fig. 2
6.13.03	Billeau Ear Loop, Fig. 3



Snellen Ear Curette

Ref. #	Description
6.14.00	Snellen Ear Curette, Micro
6.14.01	Snellen Ear Curette, Small



Day Ear Hook

Ref. #	Description
6.15.01	Day Ear Hook, 90deg, Small (1.5mm)
6.15.02	Day Ear Hook, 90deg, Medium (2.0mm)
6.15.03	Day Ear Hook, 90deg, Large (2.5mm)



Claire-Day Ear Hook

Ref. #	Description
6.15.05	Claire-Day Ear Hook, 1.5 and 2.0mm 90 Deg. Tips
6.15.06	Claire-Day Ear Hook, 2.5 and 3.0mm 90 Deg. Tips



Lucae Ear Hook

Ref. #	Description
6.16.01	Lucae Ear Hook, Small
6.16.02	Lucae Ear Hook, Medium
6.16.03	Lucae Ear Hook, Large



Wagener Ear Hook

Ref. #	Description
6.17.01	Wagener Ear Hook, 14cm, Extra Large
6.17.02	Wagener Ear Hook, 14cm, Large
6.17.03	Wagener Ear Hook, 14cm, Medium
6.17.04	Wagener Ear Hook, 14cm, Small



Office Instruments

Lillie Ear Hook

Ref. #	Description
6.18.01	Lillie Ear Hook, 1mm Ball-Tip, 90 Deg.



Hartmann Ear Forceps

Ref. #	Description
6.20.12	Hartmann Ear Alligator Forceps, Serrated, 4.5mm
6.20.13	Hartmann Ear Alligator Forceps, Serrated, 8.5mm, Delicate
6.20.14	Hartmann Ear Alligator Forceps, Serrated, 8.5mm, Heavy
6.20.42	Hartmann Ear Alligator Forceps, Smooth, 4.5mm



Duckbill Ear Forceps

Ref. #	Description
6.20.21	Duckbill Ear Forceps, Serrated



Fisch Ear Forceps

Ref. #	Description
6.20.33	Fisch Forceps, 3.5mm Delicate Serrated Jaws
6.20.34	Fisch Forceps, 3.5mm Delicate Smooth Jaws



Mini McGee Ear Forceps

Ref. #	Description
6.20.35	Mini McGee Forceps, 3.5mm Delicate Serrated Jaws
6.20.36	Mini McGee Forceps, 3.5mm Delicate Smooth Jaws



Noyes Ear Forceps

Ref. #	Description
6.20.54	Noyes Ear Forceps, Serrated, 6mm

Image not available

Gunter-Gator Ear Forceps

Ref. #	Description
6.20.64	Gunter-Gator, Delicate 4.0mm Serrated Jaws
6.20.66	Gunter-Gator, Delicate 6.0mm Serrated Jaws
6.20.68	Gunter-Gator, Delicate 8.0mm Serrated Jaws
6.20.74	Gunter-Gator, Delicate 4.0mm Smooth Jaws



Cup Ear Forceps

Ref. #	Description
6.21.00	Hartmann-Wullstein Ear Cup Forceps, Straight, 1.0mm
6.21.01	Hartmann Ear Cup Forceps, Straight, 2.0mm
6.21.02	Hartmann Ear Cup Forceps, Straight, 2.5mm
6.21.03	Hartmann Ear Cup Forceps, Straight, 3.0mm
6.21.31	Hartmann-Herzfeld Cup Forceps, 2.0mm Straight
6.21.32	Hartmann-Herzfeld Cup Forceps, 2.5mm Straight
6.21.33	Hartmann-Herzfeld Cup Forceps, 3.0mm Straight
6.21.81	Ear Cup Forceps, Oval 0.6mm Cup, Straight
6.21.82	Ear Cup Forceps, Oval 0.6mm Cup, Right
6.21.83	Ear Cup Forceps, Oval 0.6mm Cup, Left



Office Instruments

Bellucci Scissors

Ref. #	Description
6.22.01	Bellucci Ear Scissors, Straight
6.22.03	Bellucci Ear Scissors, Left
6.22.04	Bellucci Ear Scissors, Right
6.22.30	Micro-Bellucci Scissors, Straight 3.5mm Tips



Dressing Forceps

Ref. #	Description
6.23.00	Hartmann Ear Dressing Forceps, Delicate
6.23.01	Hartmann Ear Dressing Forceps, Small



Crimping Forceps

Ref. #	Description
6.24.00	McKenna Crimping Forceps
6.24.01	McKenna Crimping Forceps with Spring



Tuning Fork

Ref. #	Description
6.30.04	Hartmann Tuning Fork, C-128
6.30.05	Hartmann Tuning Fork, C-256
6.30.06	Hartmann Tuning Fork, C-512
6.30.07	Hartmann Tuning Fork, C-1024
6.30.08	Hartmann Tuning Fork, C-2048
6.30.09	Hartmann Tuning Fork, C-4096



Syringe

Ref. #	Description
6.40.01	Ear Syringe, Set Complete, 50ml
6.40.02	Ear Syringe, Set Complete, 75ml
6.40.03	Ear Syringe, Set Complete, 100ml
6.40.04	Ear Syringe, Tip, Tapered
6.40.05	Ear Syringe, Tip, Bulb
6.40.06	Ear Syringe, Splash Guard



Dressing Forceps

Ref. #	Description
6.50.01	Lucae Dressing Forceps, 14cm
6.52.01	Troeltsch-Wilde Forceps, 12cm



Barbara Ear Needle

Ref. #	Description
6.55.01	Barbara Ear Needle, Straight Shaft, Straight Tip
6.55.02	Barbara Ear Needle, Angled Shaft, Straight Tip



Rosen Ear Needle

Ref. #	Description
6.56.00	Rosen Ear Needle, Straight Shaft, Lightly Curved Tip
6.56.01	Rosen Ear Needle, Straight Shaft, Strongly Curved Tip
6.56.03	Rosen Ear Needle, Straight Shaft, Extra-Light Curved Tip



Office Instruments

Quesnel Ear Needle

Ref. #	Description
6.56.20	Quesnel Ear Needle, Straight Sharp and Blunt Tips
6.56.21	Quesnel Ear Needle, Light Curved Sharp and Blunt Tips
6.56.22	Quesnel Ear Needle, Medium Curved Sharp and Blunt Tips
6.56.23	Quesnel Ear Needle, Strong Curved Sharp and Blunt Tips



Shambaugh Hook

Ref. #	Description
6.57.10	Shambaugh Ear Hook, 90 Deg., 1.0mm
6.57.15	Shambaugh Ear Hook, 90 Deg., 1.5mm
6.57.20	Shambaugh Ear Hook, 90 Deg., 2.0mm



Schuknecht Hook

Ref. #	Description
6.57.31	Schuknecht Hook, Angled Shaft, 90 Deg. 0.3mm Tip, Up
6.57.32	Schuknecht Hook, Angled Shaft, 90 Deg. 0.6mm Tip, Up
6.57.33	Schuknecht Hook, Angled Shaft, 90 Deg. 1.0mm Tip, Up
6.57.34	Schuknecht Hook, Angled Shaft, 90 Deg. 0.3mm Tip, Down
6.57.35	Schuknecht Hook, Angled Shaft, 90 Deg. 0.6mm Tip, Down
6.57.36	Schuknecht Hook, Angled Shaft, 90 Deg. 1.0mm Tip, Down

Image not available

Curette

Ref. #	Description
6.58.00	Blue Jean Super Curette
6.58.01	Green Jean Super Curette



Krause Snare

Ref. #	Description
6.99.00	Krause Snare, Ear
6.99.01	Snare Wire, Ear, 12 Pack



Struempel Forceps

Ref. #	Description
7.06.10	Struempel Forceps, 125mm, 2.5 x 6.0mm Straight Jaws
7.06.11	Struempel Forceps, 125mm, 2.5 x 6.0mm 45 Deg. Jaws
7.06.12	Struempel Forceps, 125mm, 2.5 x 6.0mm 90 Deg. Jaws

Image not available

Weil-Blakesley Forceps

Ref. #	Description
7.06.26	Weil-Blakesley Forceps, 2.5mm, Straight
7.06.27	Weil-Blakesley Forceps, 2.5mm, 45 Degree
7.06.28	Weil-Blakesley Forceps, 3.5mm, Straight
7.06.29	Weil-Blakesley Forceps, 3.5mm, 45 Degree
7.06.30	Weil-Blakesley Forceps, 4.0mm, Straight
7.06.31	Weil-Blakesley Forceps, 4.0mm, 45 Degree
7.06.32	Weil-Blakesley Forceps, 2.5mm, 90 Degree
7.06.33	Weil-Blakesley Forceps, 3.5mm, 90 Degree
7.06.34	Weil-Blakesley Forceps, 4.0mm, 90 Degree



Takahashi Forceps

Ref. #	Descript
7.06.48	Takahashi Nasal Forceps, 2.0mm Straight
7.06.49	Takahashi Nasal Forceps, 2.0mm 45 Deg.
7.06.50	Takahashi Nasal Forceps, 2.5mm Straight
7.06.51	Takahashi Nasal Forceps, 2.5mm 45 Deg.
7.06.52	Takahashi Nasal Forceps, 3.0mm Straight
7.06.53	Takahashi Nasal Forceps, 3.0mm 45 Deg.
7.06.54	Takahashi Nasal Forceps, 4.0mm Straight
7.06.55	Takahashi Nasal Forceps, 4.0mm 45 Deg.



Office Instruments

Thru-Cut Forceps

Ref. #	Description
7.07.26	Thru-Cut Sinus Forceps, 2.5mm, Straight
7.07.27	Thru-Cut Sinus Forceps, 2.5mm, 45 Degree
7.07.28	Thru-Cut Sinus Forceps, 3.5mm, Straight
7.07.29	Thru-Cut Sinus Forceps, 3.5mm, 45 Degree
7.07.30	Thru-Cut Sinus Forceps, 4.0mm, Straight
7.07.31	Thru-Cut Sinus Forceps, 4.0mm, 45 Degree



Ostium Seeker

Ref. #	Description
7.07.70	Ostium Seeker, Frontal
7.07.71	Ostium Seeker, Maxillary



Hartmann Nasal Speculum

Ref. #	Description
7.10.01	Hartmann-Halle Nasal Specula, #1
7.10.02	Hartmann-Halle Nasal Specula, #2
7.10.03	Hartmann-Halle Nasal Specula, #3
7.11.01	Hartmann Nasal Specula, #1
7.11.02	Hartmann Nasal Specula, #2
7.11.03	Hartmann Nasal Specula, #3



Tieck-Halle Nasal Speculum

Ref. #	Description
7.12.02	Tieck-Halle Nasal Specula, #2



Vienna Nasal Speculum

Ref. #	Description
7.14.01	Vienna Nasal Specula, #1
7.14.02	Vienna Nasal Specula, #2
7.14.03	Vienna Nasal Specula, #3



Killian Nasal Speculum

Ref. #	Description
7.15.35	Killian Nasal Specula, 13cm, 35mm
7.15.50	Killian Nasal Specula, 13cm, 50mm
7.15.75	Killian Nasal Specula, 13cm, 75mm
7.15.90	Killian Nasal Specula, 13cm, 90mm



Cottle Nasal Speculum

Ref. #	Description
7.16.35	Cottle Nasal Specula, 15cm, 35mm
7.16.50	Cottle Nasal Specula, 15cm, 50mm
7.16.75	Cottle Nasal Specula, 15cm, 75mm
7.16.90	Cottle Nasal Specula, 15cm, 90mm



Jansen Dressing Forceps

Ref. #	Description
7.19.01	Jansen Dressing Forceps, 16cm
7.19.02	Jansen Dressing Forceps, 18cm
7.19.03	Jansen Dressing Forceps, 20cm



Office Instruments

Hartmann Nasal Dressing Forceps

Ref. #	Description
7.20.01	Hartmann Nasal Dressing Forceps, 16cm, Small



Noyes Nasal Forceps

Ref. #	Description
7.32.10	Noyes Nasal Forceps, Serrated

Image not available

Backbiters

Ref. #	Description
7.32.65	Backbiting Sinus Forceps, Rotating, Pediatric
7.32.66	Backbiting Sinus Forceps, Rotating, Adult
7.32.70	Backbiting Sinus Forceps, Pediatric, Up
7.32.71	Backbiting Sinus Forceps, Pediatric, Right
7.32.72	Backbiting Sinus Forceps, Pediatric, Left
7.32.73	Backbiting Sinus Forceps, Adult, Up
7.32.74	Backbiting Sinus Forceps, Adult, Right
7.32.75	Backbiting Sinus Forceps, Adult, Left

Image not available

Freer Elevator

Ref. #	Description
7.35.02	Freer Elevator, Round Handle
7.35.03	Freer Elevator, Square Handle
7.35.07	Freer Elevator with Suction



Bowman Lacrymal Probe

Ref. #	Description
7.38.01	Bowman Lacrymal Probe, SS, 0000/000
7.38.02	Bowman Lacrymal Probe, SS, 00/0
7.38.03	Bowman Lacrymal Probe, SS, 1/2
7.38.04	Bowman Lacrymal Probe, SS, 3/4
7.38.05	Bowman Lacrymal Probe, SS, 5/6
7.38.06	Bowman Lacrymal Probe, SS, 7/8



Krause Nasal Snare

Ref. #	Description
7.99.00	Krause Snare, Nasal
7.99.01	Snare Wire, Nasal, 12 Pack



Wieder Tongue Depressor

Ref. #	Description
8.00.01	Wieder Tongue Depressor, Small
8.00.02	Wieder Tongue Depressor, Large

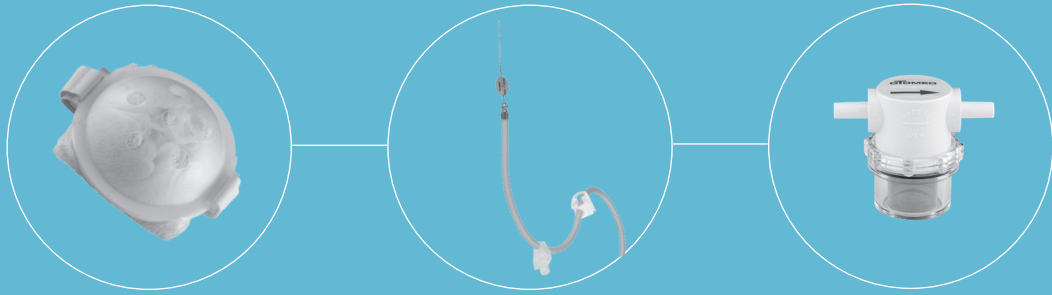


Laryngeal Mirror

Ref. #	Description
8.10.000	Laryngeal Mirror with Handle, #00, (8mm)
8.10.00	Laryngeal Mirror with Handle, #0 (10mm)
8.10.01	Laryngeal Mirror with Handle, #1 (12mm)
8.10.02	Laryngeal Mirror with Handle, #2 (14mm)
8.10.03	Laryngeal Mirror with Handle, #3 (16mm)
8.10.04	Laryngeal Mirror with Handle, #4 (18mm)
8.10.05	Laryngeal Mirror with Handle, #5 (20mm)
8.10.06	Laryngeal Mirror with Handle, #6 (22mm)
8.10.07	Laryngeal Mirror with Handle, #7 (24mm)
8.10.08	Laryngeal Mirror with Handle, #8 (26mm)
8.10.09	Laryngeal Mirror with Handle, #9 (28mm)
8.10.10	Laryngeal Mirror with Handle, #10 (30mm)







Otomed

*May not be available in all countries

Collecting Devices

Ref. #	Description	Pkg.
S-2500	Sheehy Bone Dust Collector	1/box



Ref. #	Description	Pkg.
S-3500	Cox Bone Dust Collector	1/box



Ref. #	Description	Pkg.
SP-2000	SafeTrap Tissue Collector	1/box



Surgical Tubing

Ref. #	Description	Pkg.
SP-3000	Levine Irrigation-Suction Tubing	6/box



Ref. #	Description	Pkg.
SP-4000	Otomed Suction Tubing	6/box



Surgical Drapes

Ref. #	Description	Pkg.
SD-2100	Glasscock Otology Drape	6/box



Ref. #	Description	Pkg.
SD-2200	Glasscock Neurotology Drape	6/box



Surgical Dressing

Ref. #	Description	Pkg.
S-1000	Glasscock Ear Dressing, Adult	6/box



Ref. #	Description	Pkg.
S-1003	Glasscock Ear Dressing, Pediatric	6/box



Ref. #	Description	Pkg.
S-1010-2	Pressure Dressing - 3" nonconform	6/box



Accessories

Ref. #	Description	Pkg.
S-3001	Sheehy-House Powder Insufflator	1/box







Product Information

Product Information

Biomaterial Selection

All biomaterials selected by Grace Medical, Inc. meet or exceed ASTM and international standards for implant grade materials. Current implant material choices include:

Hydroxylapatite - This biomaterial is among the most biocompatible materials available for use. Its structure is essentially calcium and phosphorous resembling the chemical composition of bone. Implant materials used by Grace Medical, Inc. are dense hydroxylapatite with minimum porosity.

Otosil - Otosil is a combination of silicone and barium sulfate. The barium sulfate adds rigidity to the silicone while still providing elastic properties. Because barium sulfate is a radio-contrast agent, it is helpful for determining the position of the implant by x-ray. OtoSil shafts can be trimmed using a scalpel.

Nitinol - As Heat-Activated Shape Memory - Nitinol is typically composed of approximately 50% to 55.6% nickel by weight in proportion to the titanium content. Nitinol is a non-ferromagnetic material with a lower magnetic susceptibility than stainless steel. When heat is applied to the Nitinol wire causing it to reach its transition temperature, it remembers and returns to its formed shape.

Nitinol - As Superelastic Shape Memory - Same material only treated differently. There is no transition temperature using superelastic nitinol. The wire is formulated to gain a spring-like character. Superelastic nitinol exerts forces to remain closed.

PTFE (polytetrafluoroethylene) - Frequently referred to as TEFLON® or fluoroplastic (FLPL) - this highly inert material is widely used for implant applications. Its properties are well suited for tympanostomy tubes due to its “slick” characteristics that may help limit clogging of tube lumens.

*Teflon is a registered trademark of the E.I. DuPont de Nemours and Co., Wilmington, D.E.

Silicone - This time proven biomaterial has excellent properties for ventilation tubes and middle ear implant application. Tubes can be “squeezed” with forceps allowing for compact insertion of the tube yet retaining its original preformed shape once securely in place. Firm durometer (hardness) silicone is used for implant shaft materials due to its stiffness and inert properties.

Phosphorylcholine - PC is a totally synthetic, stable polymer coating that develops a covalent molecular water layer on the material surface. These molecules bind themselves tightly, making it difficult for proteins and cells to displace the water and attach to the surface of the ventilation tube. PC coating applied to silicone ventilation tubes helps to enhance resistance to bacterial infection.

Titanium - ASTM F67 Grade 2 Titanium is a lightweight, highly biocompatible material that has found increasing application replacing stainless steel. It is very lightweight and non-reactive to MRI.

Polyethylene - Polyethylene, which is composed of only carbon and hydrogen atoms, is a popular implant material used in a variety of microsurgery applications. Bioinertness and the ability to have smooth surfaces are but a few of the qualities that make polyethylene appropriate for ventilation tubes.

Customer Orders

Orders may be placed by contacting Grace Medical, Inc. 8500 Wolf Lake Drive, Suite 110, Memphis, TN 38133, toll free for US customers 1.866.GRACEMED (1.866.472.2363); international customers should call USA 901.386.0990, fax 901.386.0950, email info@gracemedical.com

When ordering, please specify:

- Customer account number
- Purchase order number
- Shipping and billing address
- Quantity required
- Catalog reference number
- Special handling or shipping instructions

Please note that minimum order quantities may apply. Ventilation tubes are packaged in boxes of five, ten, thirty and sixty sterile packages per box. Ten and Sixty packs have two tubes per package.

Product Report

Please report any comments or complaints to Grace Medical, Inc. including user name, address, phone, product reference number, product lot number, date and description of the event. Incidents related to Grace Medical, Inc. products which involve potential serious injury must be reported immediately to Grace Medical, Inc.

Terms, Payments & Notice

Quotes & payments are made in US dollars. Grace Medical, Inc. reserves the right to discontinue products or to change specifications, designs, pricing, or terms and conditions of sale without prior notice or obligation. Applicable Federal, State, or other sales or use taxes will be added unless exemption certificate is supplied by the purchaser.

Payment terms are net 30 days, F.O.B. Memphis, TN USA. Check remittances should be forwarded to: Grace Medical, Inc., PO Box 34877, Memphis, TN 38134. If remitting by wire, please contact the accounting department for instructions at 901.386.0990.

The prices and warranties quoted herein apply only to products bought for the purchaser's own use. If product is not devoted to purchaser's own use and is resold, all warranties are immediately null and void.

Acceptance of Grace Medical, Inc.'s offer to sell the products listed herein is expressly limited to the terms set out herein and all sales of product are conditioned upon the acceptance of, and are subject to, the terms set out herein. All orders for product shall be deemed to incorporate and accept these terms by reference and any deviation from said terms shall be ineffective and void.

Product Information

Returned Material Policy

Grace Medical, Inc. will accept items for return within 60 days of the original shipment date. To request a return authorization, please have the following information available:

- Item number to be returned and quantity for return
- Lot number and/or invoice from original shipment
- Date of original shipment
- Reason for product return

Returned products will be credited if received in their original packages with unbroken security seals. No credit will be issued for product received damaged, with outdated sterility dates, broken lots of product, obsolete products, or custom products manufactured to customer's specifications.

Returned material must be forwarded transportation charges prepaid accompanied by the appropriate returned material authorization form (RMA).

Credit will be issued as follows: Less than 30 days, 100% credit of invoice price
30-60 days, 80% credit of invoice price
Over 60 days, non-refundable

Product Availability

Grace Medical, Inc. shall not be liable for any delay or failure to deliver product or otherwise perform, where such failure or delay has been occasioned by matters such as fire, flood, embargo, strike, lockout, acts of God, shortage of raw material or power, governmental action or compliance with governmental requirements, whether voluntary or pursuant to order, or any other circumstance beyond Grace Medical, Inc.'s control.

Delivery dates are based on production estimates and Grace Medical, Inc.'s best effort to ship on schedule. The right is reserved to fill orders by complete or partial shipments unless otherwise agreed. The responsibility of goods lost, damaged or delayed in transit rest with the carrier.

Limited Warranty

Grace Medical, Inc. warrant implant products to the original purchaser that all products shall be free from defects in material and workmanship as long as the integrity of the package has not been compromised. For instrument or equipment items, products are warranted for a period of 1 year from the date of delivery.

Grace Medical, Inc.'s liability from the manufacture and sale of product is expressly limited to the amount of the purchase price of the product and Grace Medical, Inc. shall in no event be liable for consequential, special or incidental damages. Grace Medical, Inc.'s warranties are exclusively limited to the preceding express warranty and all other warranties of any kind or description whatsoever, express or implied, including warranties of merchantability or fitness for a particular purpose are hereby disclaimed. No person has authority to vary or modify this warranty or to bind Grace Medical, Inc. to any other terms whatsoever.

